



# Teleflo Dial Indicator



Turning Ideas Into Engineered Solutions

**KAYDON**  
FILTRATION GROUP

*Simple Operation • "Flow - No Flow" Switch  
Use for both oil flow and water flow indication*



# Teleflo Dial Indicator

## Description

The TELEFLO Model 816BC is a rugged flow switch designed for a wide range of oil and water flow applications. For over 50 years, the TELEFLO flow indicator and switch has provided equipment protection against the loss of flow, protecting thousands of installations against costly equipment damage due to inadequate liquid flow.

## Applications:

- Bearing Lube Oil
- Gear Box Lube Oil
- Machine Tool Coolants
- Cooling Water Lines
- Seal Water

## Features

- Spring loaded vane actuated by liquid flow is connected to a red dial pointer that indicates a liquid flow reading on a graduated scale.
- Switch is set by the factory, causing switch operation when the red dial pointer advances  $1\frac{1}{2} \pm \frac{1}{2}$  graduations from the rest or no-flow condition.
- The TELEFLO is a low flow switch. No adjustments are needed if the application requires a low flow switch.
- After the TELEFLO is in operation, the switch cam may be accessed and adjusted for a different switch setting (most applications do not require any adjustments).
- Complete liquid flow control is obtained by installing two TELEFLO flow switches in a series. The first in the series is set as a low flow switch, and the second in the series is set as a high flow switch.



KAYDON Custom Filtration

ISO 9001-97

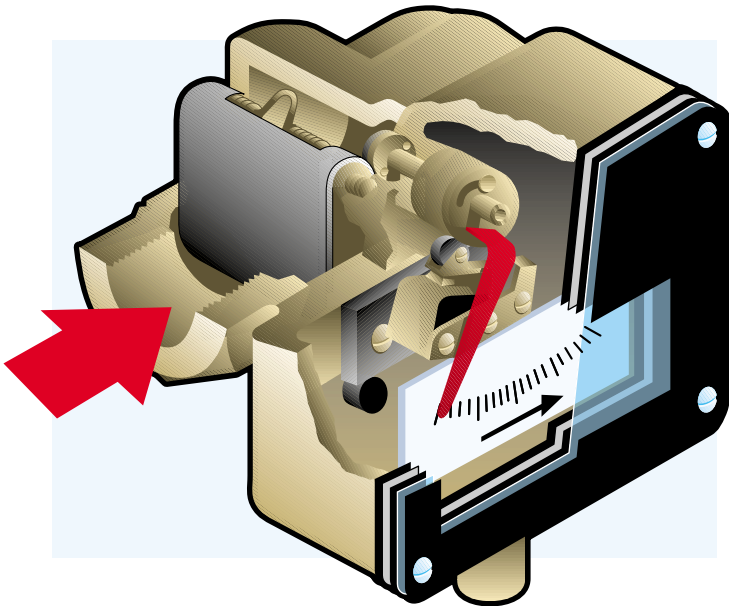


Certificate #  
002232

LaGrange, Georgia

## Operation

The red dial pointer and switch are located in the head casting. The spring loaded vane is set in motion by liquid flow in the body casting. The vane rotates the red dial pointer and switch cam as liquid flow moves against the vane. The vane shaft connected between the head casting and body casting are sealed with a Viton "O" ring. The removal of the four cover screws permits easy access for connecting to switch terminals or cam adjustments. The factory sets the switch causing switch operation when the red dial pointer advances  $1\frac{1}{2} \pm \frac{1}{2}$  graduations from the rest or no-flow condition.



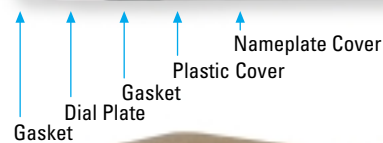
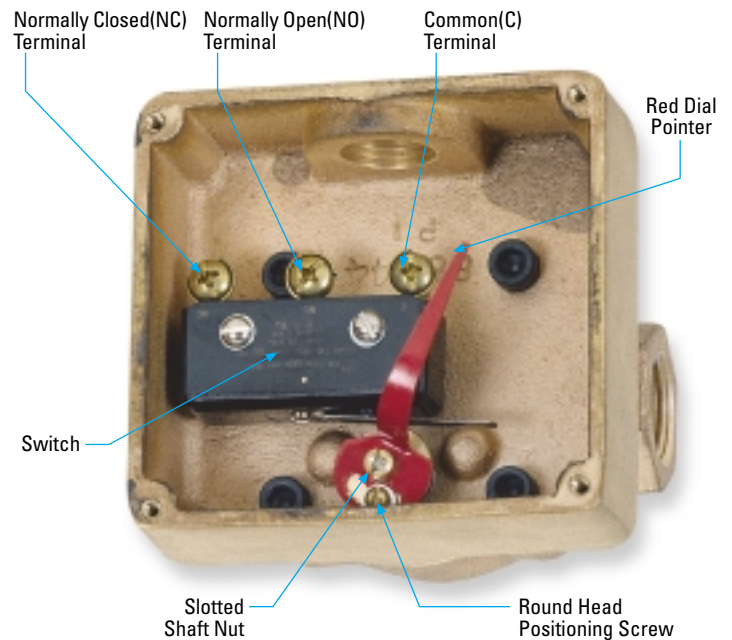
The fluid enters in at the inlet and moves against the spring-loaded vane. The vane shaft connected to the red dial pointer rotates according to the amount of fluid advancing against the vane. The movement of the red dial pointer indicates fluid flow. The vane shaft also operates a cam that activates a SPDT switch.

## Specifications

- Body and head casting: Bronze – 85-5-5-5
- Finish: Bronze acid dip
- Dial: Aluminum background with black graduations
- Pointer: Brass painted red
- Window: Clear acrylic plastic
- Switch: S.P.D.T. – 15A-125V, 7A-250V
- Head Gasket: Garlock 7022
- Seal: Viton A "O" Ring Seal
- Pressure: 125psi @ 200°F
- Weatherproof head

## Installation

Teleflo Indicators may be installed in any position.



### Flow Rate Information

- The High Flow Point is the flow rate that will give a full flow reading on the scale. This is not the maximum flow that can be pumped through the flow switch.
- The Low Flow Point is the lowest flow that will move the flow indicator needle to indicate flow. A flow below this point is too low for the flow switch to indicate.
- The Switch Setting is the flow at which the switch will activate (change the NC contact from "closed" to "open"). The switch is a SPDT (single pole double throw).

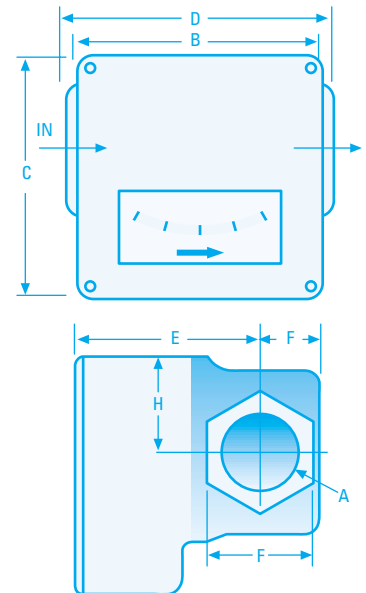


### 150 SSU Turbine Oil

Size	Low Flow Point	High Flow Point	Switch Setting
1/2"	2gpm	28gpm	2.5gpm
3/4"	4gpm	32gpm	4.5gpm
1"	6gpm	60gpm	7gpm
1 1/2"	8gpm	65gpm	9gpm
2"	10gpm	75gpm	11gpm

### Dimensions

General Assembly Number	816BC-1/2"	816BC-3/4"	816BC-1	816BC-1 1/2"	816BC-2
NPT Opening	1/2"	3/4"	1"	1 1/2"	2"
A Pipe Tap Size	1/2"	3/4"	1"	1 1/2"	2"
B Width of Dial	3 5/8"	3 5/8"	3 5/8"	3 5/8"	4 1/2"
C Height	3 3/8"	3 3/8"	3 3/8"	3 3/8"	4 1/2"
D Length Overall	3 5/8"	3 3/4"	3 1/4"	4 3/4"	6 1/2"
E Center to Front	2 1/4"	2 5/8"	2 5/8"	2 7/8"	3 3/8"
F Center to Front	1 1/16"	1 5/16"	1 5/16"	1 3/8"	1 3/4"
G Hex., Across Flats	1 3/16"	1 9/16"	1 9/16"	2 1/4"	3 1/4"
H Height from c of Pipe	1 5/16"	1 5/16"	1 5/16"	1 11/16"	2 5/32"



## Installation

TELEFLO flow switches may be installed in any position in a liquid line. Pipe connections are NPT. The size ranges are  $\frac{1}{2}$ ",  $\frac{3}{4}$ ", 1",  $1\frac{1}{2}$ ", and 2".

## Adjustment

The TELEFLO flow switch is factory set as a low flow switch. Most applications using the TELEFLO will not require adjustments. If the switch must be adjusted, follow these procedures:

## Procedure

The TELEFLO must be operating when the switch is adjusted. Both the high flow and low flow switch examples will use graduation mark 15 on the scale as the desired flow rate reading.

### To set the switch above desired flow rate (high flow switch)

Remove the screws holding the cover, glass, and dial plate. Temporarily replace the dial plate with the same four screws. Hold the red pointer firmly with fingers and loosen the slotted shaft nut. Rotate the red pointer in a direction against the liquid flow until switch click or continuity tester indicates switch closure. Retighten nut. Holding the red pointer, loosen the round head positioning screw and rotate the red pointer past the desired flow graduation position (from mark 15 to mark 17 or 18). Retighten red pointer positioning screw. Test for switch closure by increasing liquid flow from desired flow rate reading (mark 15). The switch should activate on a flow indication of mark 17 or 18.

### To set the switch below desired flow rate (low flow switch)

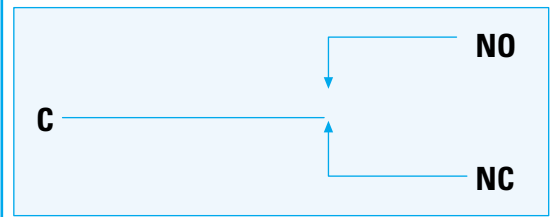
Note: The TELEFLO is set from the factory as a low flow switch. Remove the screws holding the cover, glass, and dial plate. Temporarily replace the dial plate with the same four screws. Hold the red pointer firmly with fingers and loosen the slotted shaft nut. Rotate the red pointer in a direction against the liquid flow until switch click or continuity tester indicates switch opening, then rotate back to obtain switch closure and retighten nut. Proceed as in adjustment for increased liquid flow and test for switch opening by reducing liquid flow.

Connect necessary switch leads and replace cover, glass & dial.

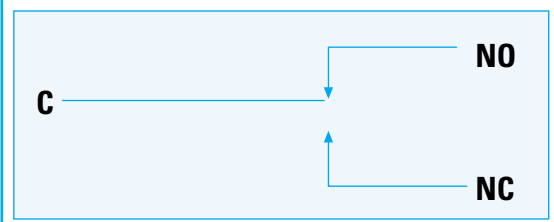
## S.P.D.T. Switch



Liquid Flow below Switch Setting Point  
Normally Closed (NC) contact is closed.



Liquid Flow above Switch Setting Point  
Normally Closed (NC) contact is open.



### Contact Rating

15A/125V, 250V, 460VAC

1/8HP 125VAC, 1/4HP 250VAC

1/2A 125VDC, 1/4A 250VAC

# TRIAD Pressure Oiler Model 903

For Pressures to 120psi at flows to 16 Pints/Min.

## Description

The TRIAD is designed to observe and indicate the flow of oil being distributed under pressure to a lubrication point.

## The triple advantage of the TRIAD

- Accurate
- Easy to read
- Does not leak
- Manifolding is available

## Applications

- Pulp & Paper – Paper Machine lube systems
- Steel Mills – Large Gearbox lube oil circuits and Rolling Mill stand lube systems

## Notes

- Maximum operating pressure: 120psig @ 200°F
- 100% tested for leaks and proper operation
- All Viton O-Ring seals
- Optional Alarm Kit
- Includes local indication (red and green L.E.D. lights) and connection for remote indication
- Power Requirements: 24VDC – 20ma Typical
- Maximum recommended operating temperature: 250°F  
Maximum recommended operating temperature (with switch option): 135°F

### FLOW DESIGNATION

SYMBOL	DESCRIPTION FLOW (PT/MIN)
2	0.25 - 2.0
4	0.5 - 4.0
18	2.0 - 8.0
16	4.0 - 16.0

MODEL 903

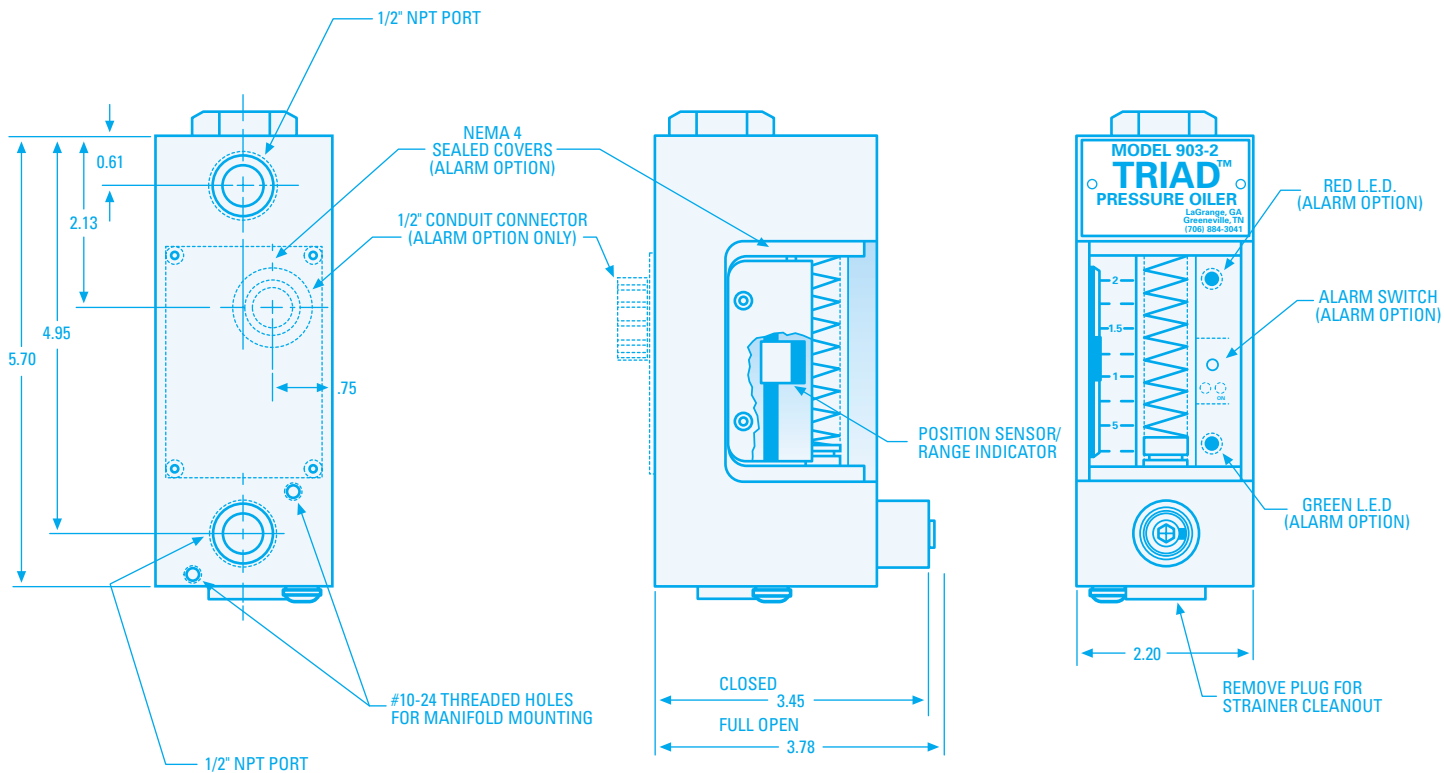


### ALARM KIT

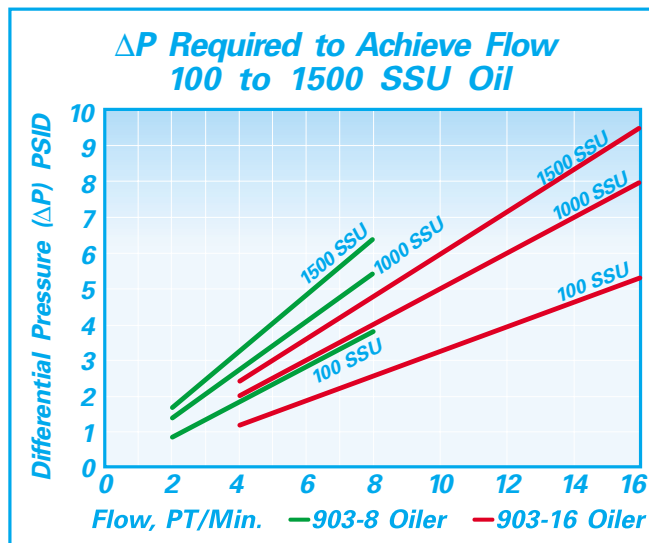
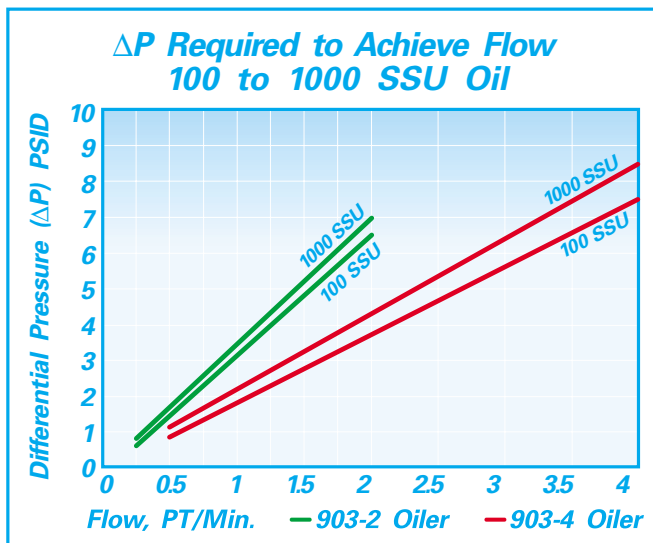
SYMBOL	DESCRIPTION
3	NO ALARM
A	ELECTRICAL ALARM

## Specifications





NOTE: 903-2 Oiler with electrical alarm option shown.



# Bowser 903B-6 Manifold Oiler

## The Bowser 903B-6 Manifold Oiler

The Bowser 903-6B manifold oiler assembly is a multiple flow indicator instrument that places six Model 903 flow tubes into one complete block manifold. The Bowser 903-6B design eliminates extra piping that is associated with mounting individual flow indicators and presents the flow tubes in an arrangement that makes it easy to determine the oil flow to six lube points. The Bowser Model 903-6B is a direct replacement to the ESKO-KYTOLA Model VE-6 oil flow monitor assembly.

## Problem

The problem with most oil flow indicators are their inaccuracy with changes in viscosity, leakage, hard-to-read and understand flow tubes and scales, and dark, cracking plastic flow tubes.

## Solution

This oiler manifold is insensitive to viscosity changes, which means the flow reading will be accurate, regardless of oil temperature changes. This oiler will not leak due to the unique Bowser "O" ring/bevel washer "no-leak" seal design. Most important of all, it is easy to read and understand. Just a quick glance tells you the flow in the units of pints/minute. (liters/minute are available). An added advantage is the glass flow tube. No more will the flow tube turn dark and crack over time.

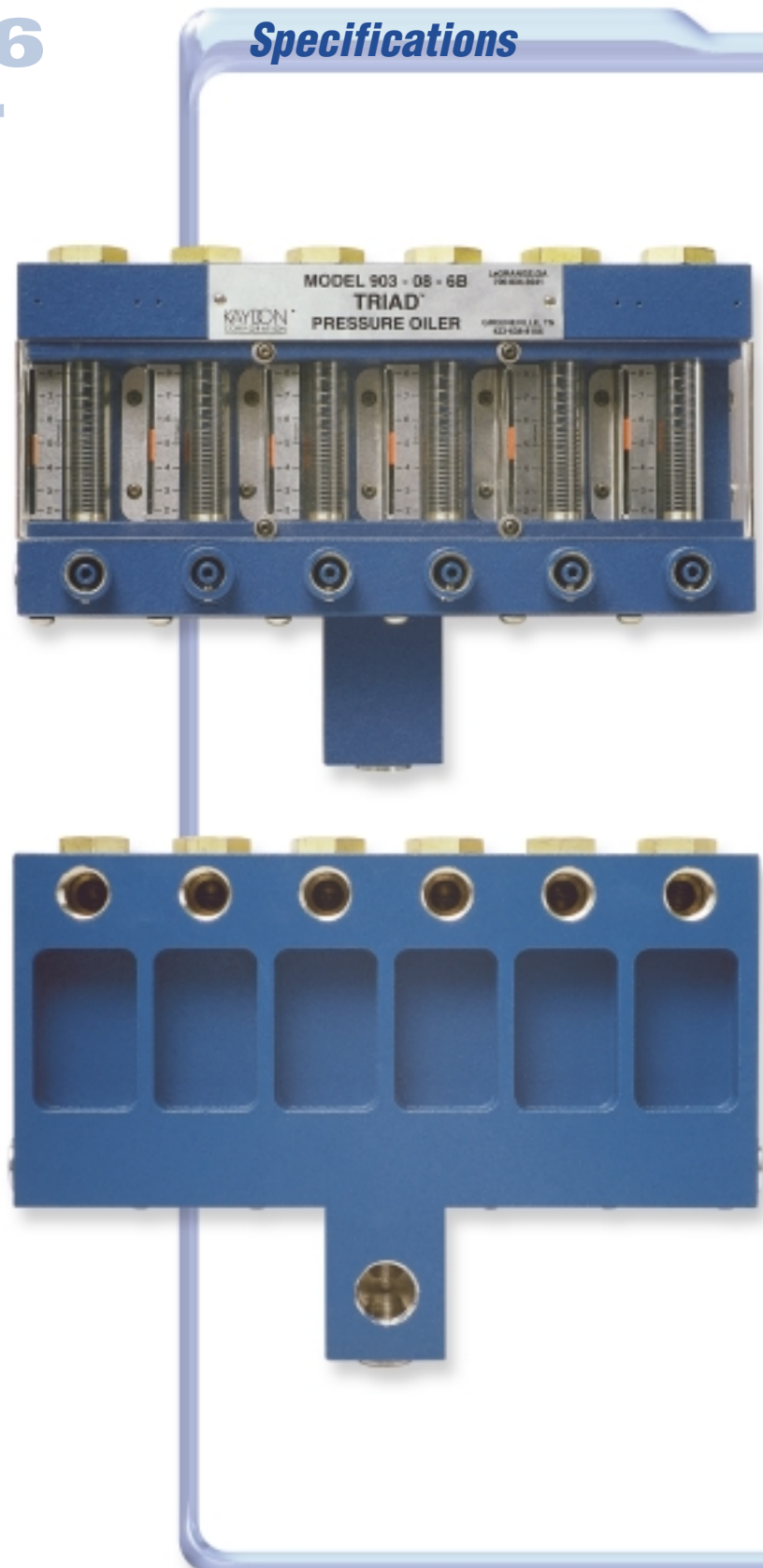
## Flow Ranges

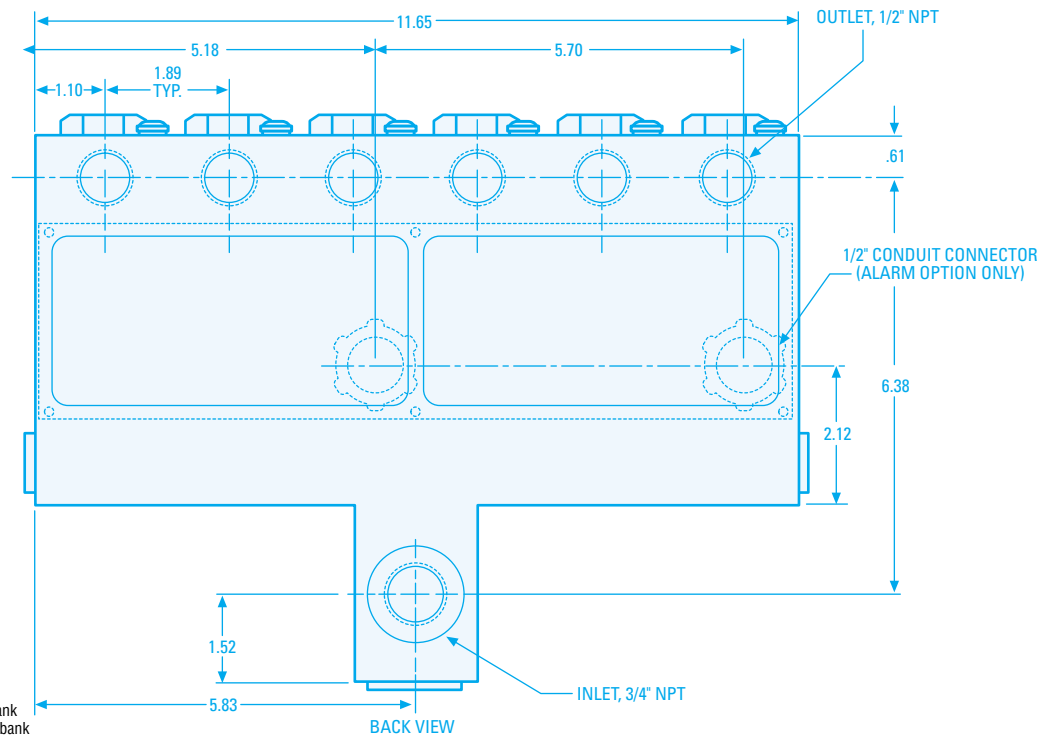
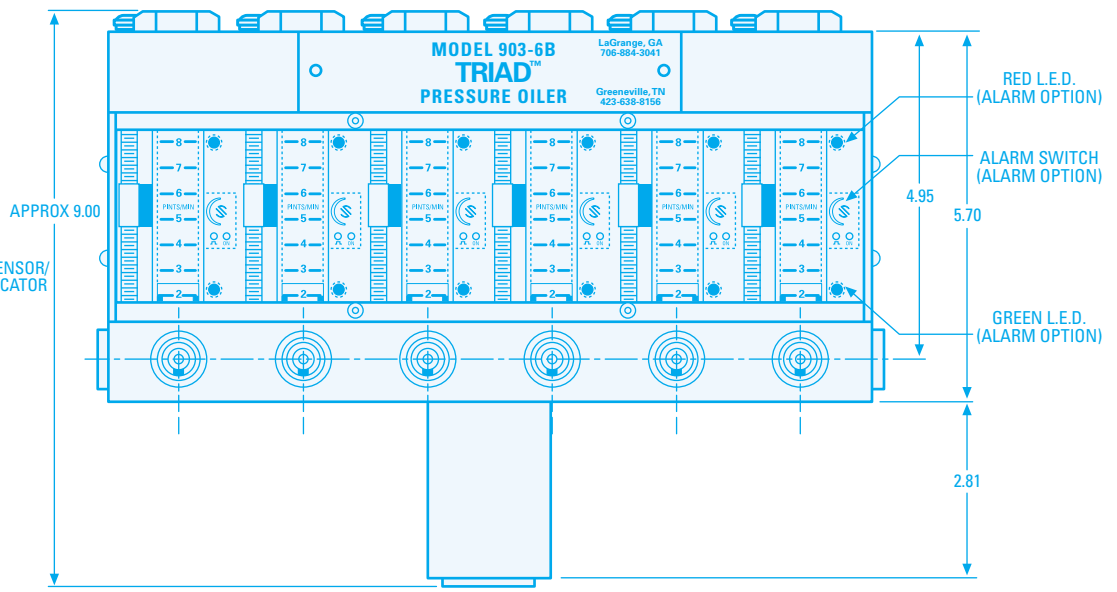
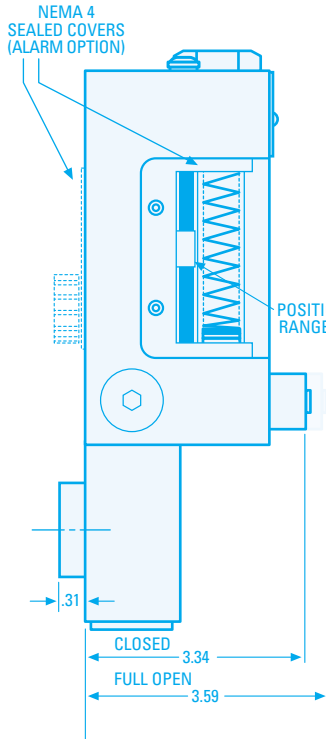
	PINTS/MIN		LITERS/MIN
2PPM	0.5 - 2.0	1LPM	0.25 - 1.0
4PPM	1.0 - 4.0	2LPM	0.5 - 2.0
18PPM	2.0 - 8.0	4LPM	1.0 - 4.0
16PPM	4.0 - 16.0	8LPM	2.0 - ~7.5

## Notes

- Base material is cast aluminum.
- Other materials of construction include glass flow tube, lexan cover, brass hold down nut, steel needle valve, viton seals, and teflon "O" ring for flow tube piston.
- Maximum operating pressure: 120psig@200F
- Maximum operating temperature: 200°F (135°F with alarm option).
- 100% tested for leaks and proper operation.
- Weight: 13 lbs.

## Specifications





**OILER FLOW DESCRIPTION**  
 FILL IN THE FLOW RATE DESIRED FOR EACH OF THE (6) OILERS FROM LEFT TO RIGHT\*  
 DESIGNATE AS FOLLOWS

2 - 2PT/MIN	1 - 1L/MIN
4 - 4PT/MIN	2 - 2L/MIN
8 - 8PT/MIN	4 - 4L/MIN
16 - 16PT/MIN	8 - 8L/MIN

XXXXXX 6B  
 MODEL 903

**ALARM KIT**

SYMBOL	DESCRIPTION
A	ELECTRICAL ALARM

**UNIT OPTION\***

SYMBOL	DESCRIPTION
P	PINTS/MIN
L	LITERS/MIN

\*Please Note: Do not mix PT/MIN with L/MIN on any given 6-Bank  
 \*\*Please Note: Do not mix alarm with non-alarm on any given 6-bank

# Model 825 Overflow Sights

## Description

Kaydon Model 825 Overflow Sights are designed for convenient observation of liquid flow and are extremely practical for maintaining a desired or fixed level of liquid circulating in a system.

## Applications

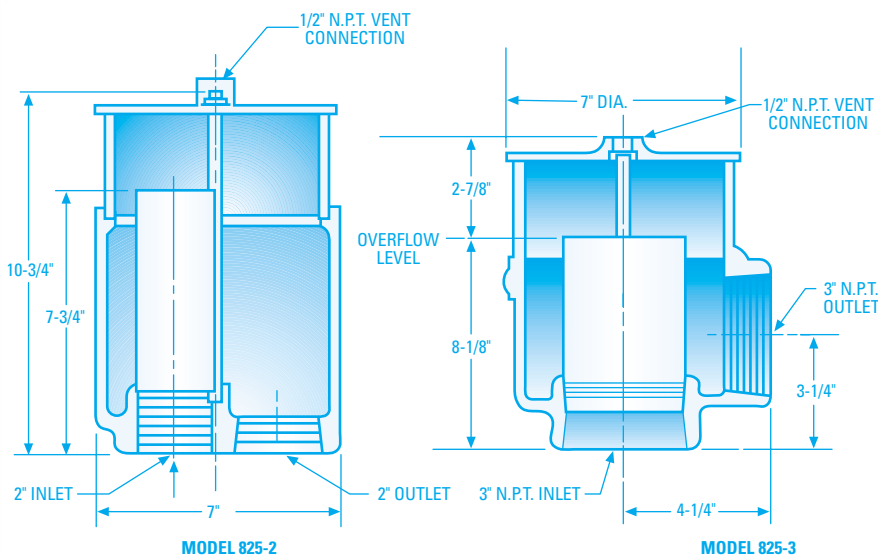
- Bearing Reservoirs
- Gear Cases
- Turbine Reservoirs
- Other Equipment

## Features

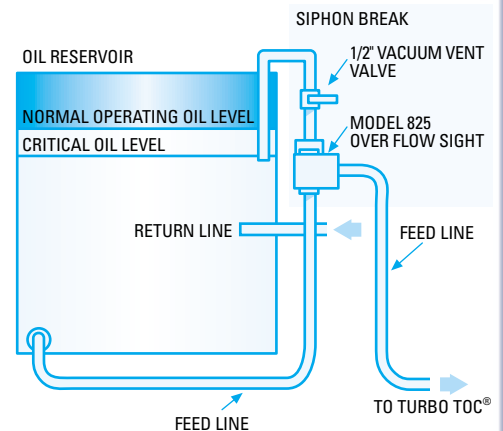
- Clear glass viewing walls, which are easily removed for occasional cleaning.
- Equipped with metal top and 1/2" NPT connection for vacuum operating installations.
- Top is easily tightened or removed.
- Cast iron body construction with white enamel interior and a Kaydon blue exterior.



## Specifications



## TYPICAL MODEL 825 OVERFLOW SIGHT INSTALLATION



- 1/2" Vacuum vent valve is normally open, closed only for draining tank. Vent line inlet must be at critical oil level inside tank.
- Model 825 Over Flow Sight (top of inlet pipe/bottom of glass) must be installed at critical oil level, or slightly higher.

# Model 4B Gravity Oiler

## Description

The Gravity Sight Feed Oiler affords a clear view and fine control of oil flowing by gravity, to a lubrication point.

## Applications

- Paper Mill Machine Oiling Systems

## Features

- Body vent prevents the fogging of the windows.
- Cast iron body construction with glass windows, bronze fittings and a blue enamel finish.
- Maximum operating temperature of 225°F
- Flow through the oiler is relative to the adjustment of the screw for various viscosities of oil at different supply pressures.

## Installation

The Model 4B Oiler must be installed in a vertical position.

## Operation

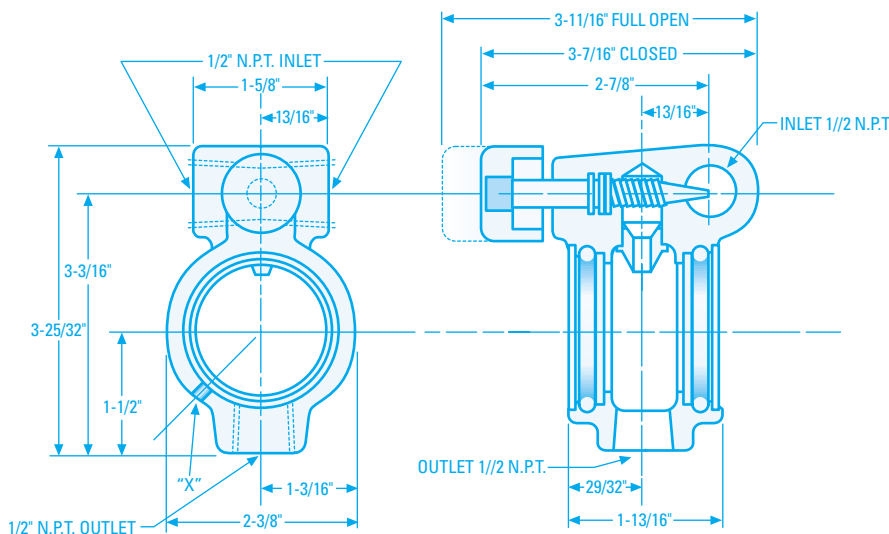
Start the flow of oil through the system. Turn the oiler adjusting screw to open the oiler. Adjust the screw until the described flow is obtained.

## Maintenance

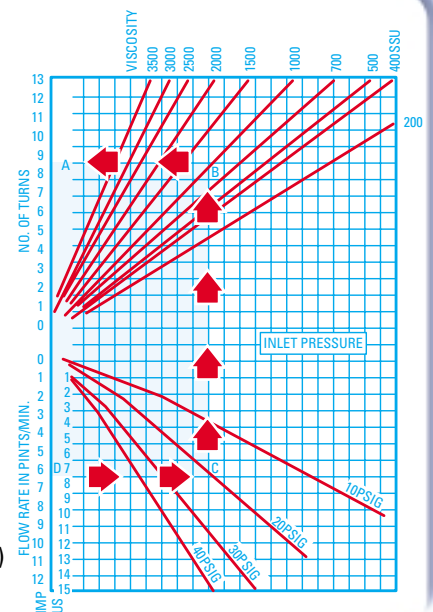
This oiler should give trouble-free service with little or no maintenance required. It may be desirable to clean windows periodically. To do so, close the adjusting screw to stop the flow through the oiler. Insert a pointed tool into the hole in the body (See "X" in figure below) to push the "O" ring away from the body. By pulling the loop thus formed, the "O" ring may be easily withdrawn from the body. To facilitate the removal of the glass window, touch a piece of adhesive tape to the glass and pull gently. Clean glass with a soft cloth. Inspect "O" ring and replace if worn or damaged.



## Specifications

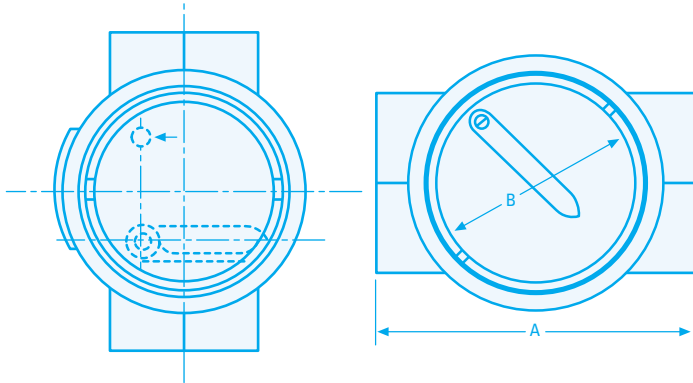


**Flow Rate Adjustment:** Select the desired flow rate of 7.5 US pints/minute on scale pints/minutes (D) and known inlet pressure of 20 PSIG (C) and known viscosity of 1000 SSSU (B) and read the correct number of turns of control knob on scale (A) to give the required flow rate.

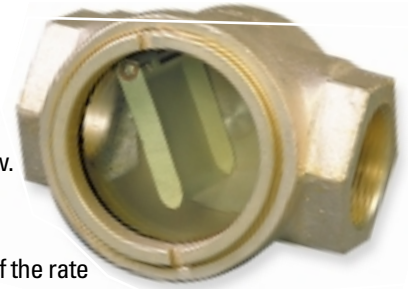


## Model 811A Vane Type Indicator

The Kaydon Model 811A vane type indicator utilizes a single observation window and a flow activated vane to furnish a constant readout of liquid flow, clarity and color.



- Spring activated vane.
- Clear window for easy observation of liquid flow.
- Observation of vane positioning gives an approximate indication of the rate of flow.
- Easy observation of flow from either right or left, up or down.
- Brass construction with wire brushed exterior finish.
- Withstands a working pressure of 125psi.
- Standard heat treated glass window meets MIL-G-2697.



### Dimensions

	811A-1/2"	811A-3/4"	811A-1"	811A-1 1/2"	811A-2"
Pipe Size (NPT)	1/2"	3/4"	1"	1 1/2"	2"
Dimension A	3"	3 3/4"	3 3/4"	4 3/4"	6 1/2"
Dimension B	1 5/8"	1 7/8"	1 7/8"	2 3/4"	3 7/8"
Front to Back	2 3/16"	2 13/16"	2 13/16"	3 11/16"	4 1/16"

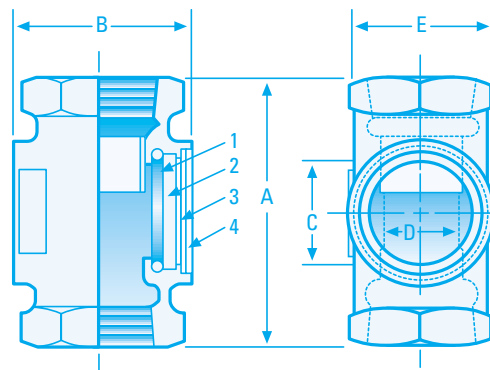
## Model 55B Double Window Flow Sight Indicator

All Flow Sights are equipped with heat treated glass windows which meet MIL-G-2697. Units feature a simplified window closure design which incorporates a retaining ring and a positive "O" ring seal.

### Dimensions

Pipe Size:	3/4"	1"	1 1/2"	2"
Dim. A End to End	4"	4 1/2"	4 7/8"	7 1/8"
Dim. B Face to Face	2 1/2"	3"	3 3/16"	4 1/4"
Dim. C Visibility	1 5/8"	1 3/4"	1 3/4"	2 13/16"
Dim. D I.D. of Inlet Nozzle	2 3/16"	2 13/16"	2 13/16"	3 11/16"
Dim. E Across Flats of Hex	2 3/16"	2 13/16"	2 13/16"	3 11/16"

1. O-Ring 2. Sight Glass 3. Washer 4. Retaining Ring



Turning Ideas Into Engineered Solutions

**KAYDON**  
FILTRATION GROUP



**KAYDON**  
ELEMENT TECHNOLOGY

**FilterDyne**  
Vacuum Filtration

**fi Clean Fuel Incorporated**

800-241-2342

[www.kaydonfiltration.com](http://www.kaydonfiltration.com)  
e-mail: [filtration@kaydon.com](mailto:filtration@kaydon.com)

See Us in The Thomas Register: Print • Internet • CD-Rom • PlantSpec®  
[www.thomasregister.com/kaydonfilter](http://www.thomasregister.com/kaydonfilter)

#### Group Headquarters

1571 Lukken Industrial Dr.-W.  
LaGrange, Georgia 30240  
Phone: 800-241-2342  
Fax: 706-883-6199

KAYDON Custom Filtration



ISO 9001-97

Certificate #  
002232

LaGrange, Georgia

Turning Ideas Into Engineered Solutions

**KAYDON**  
FILTRATION GROUP

**TRIAD PRESSURE OILER**  
**MODEL 903-2 - 1/2" NPT**  
Pressures to 120 PSI  
Flow Range .25-2 Pints/Minute

**DESCRIPTION**

The TRIAD is designed to observe and indicate the flow of oil being distributed under pressure to a lubrication point.

**The Triple Advantage of TRIAD:**

- Accurate
- Easy to Read
- Does Not Leak

*Manifolding is available.*

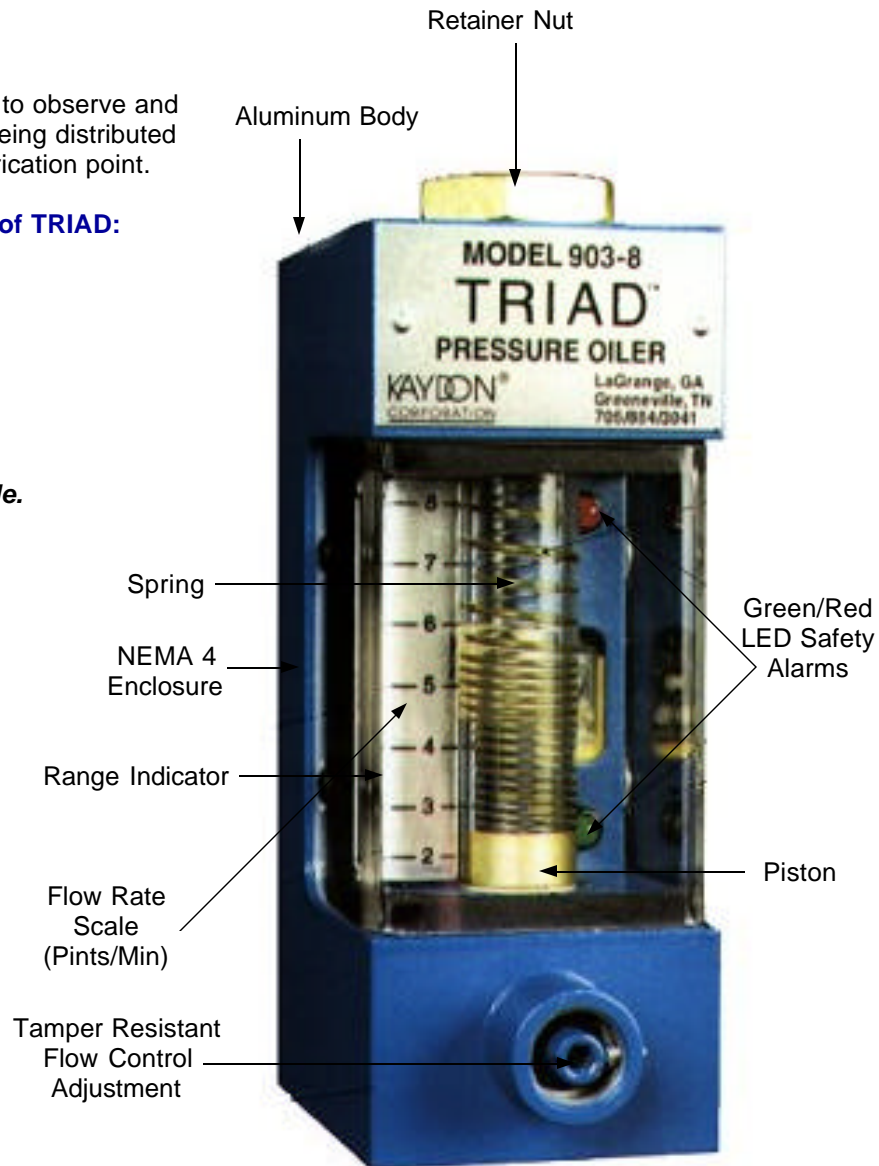
**APPLICATIONS**

- Paper Mills
- Steel Mills

**CONNECTIONS:**

INLET  
3/4" NPT

OUTLET  
1/2" NPT



*Model 903-8 shown with appropriate Flow Rate Scale to Max of 8 Pints/Minute.*

**KAYDON FILTRATION GROUP**

[www.kaydonfiltration.com](http://www.kaydonfiltration.com)

Instant Literature-by-Fax: [www.kaydonfilter.thomasregister.com](http://www.kaydonfilter.thomasregister.com)

1571 Lukken Industrial Drive West - LaGrange, GA 30240-5756

Phone: 706-884-3041 Fax: 706-883-6199

**800-241-2342 ext. 3**

ISO 9001-97



Certificate #002232

**MADE IN U.S.A.**

Turning Ideas Into Engineered Solutions



**TRIAD PRESSURE OILER**  
**MODEL 903-4 - 1/2" NPT**  
Pressures to 120 PSI  
Flow Range .5-4 Pints/Minute

**DESCRIPTION**

The TRIAD is designed to observe and indicate the flow of oil being distributed under pressure to a lubrication point.

**The Triple Advantage of TRIAD:**

- Accurate
- Easy to Read
- Does Not Leak

*Manifolding is available.*

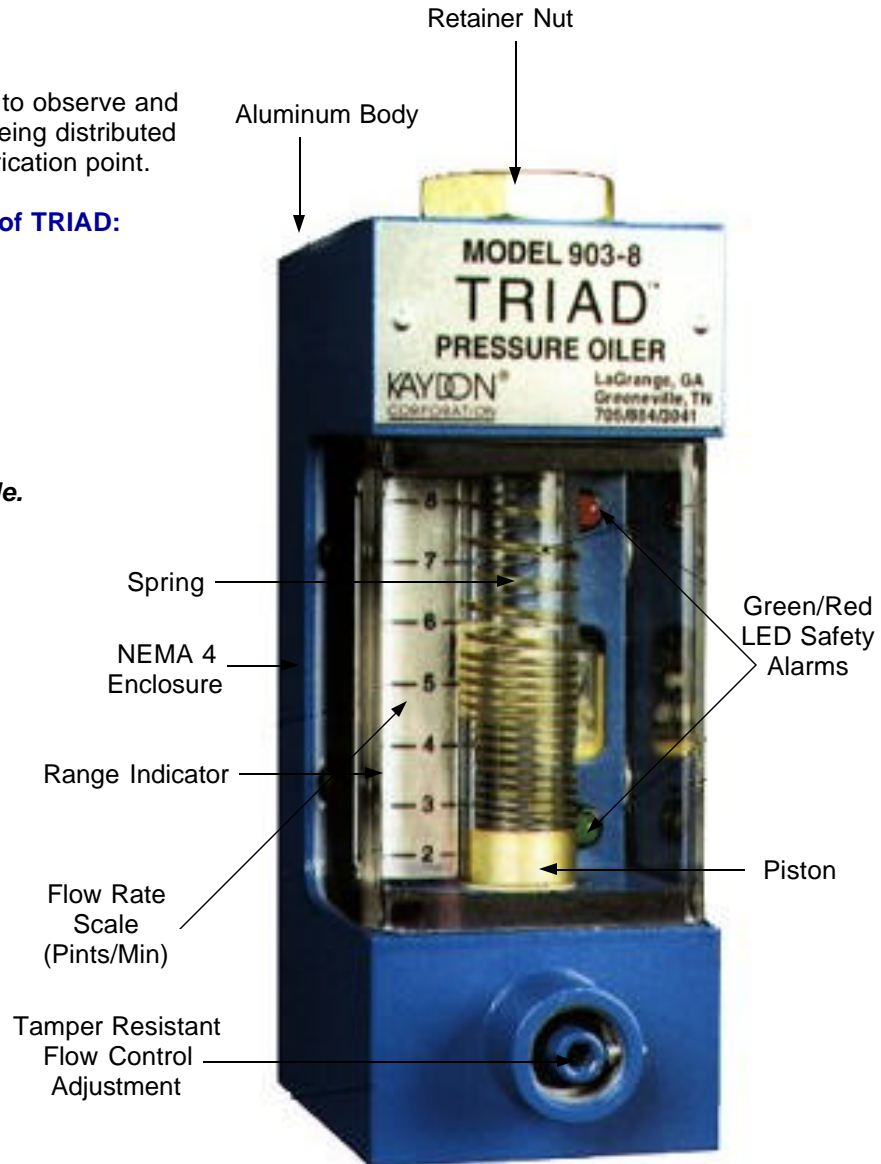
**APPLICATIONS**

- Paper Mills
- Steel Mills

**CONNECTIONS:**

INLET  
3/4" NPT

OUTLET  
1/2" NPT



*Model 903-8 shown with appropriate Flow Rate Scale to Max of 8 Pints/Minute.*

**KAYDON FILTRATION GROUP**

[www.kaydonfiltration.com](http://www.kaydonfiltration.com)

Instant Literature-by-Fax: [www.kaydonfilter.thomasregister.com](http://www.kaydonfilter.thomasregister.com)

1571 Lukken Industrial Drive West - LaGrange, GA 30240-5756

Phone: 706-884-3041 Fax: 706-883-6199

**800-241-2342 ext. 3**

ISO 9001-97



Certificate #002232

**MADE IN U.S.A.**

Turning Ideas Into Engineered Solutions

**KAYDON**  
FILTRATION GROUP

**TRIAD PRESSURE OILER**  
**MODEL 903-8 - 1/2" NPT**  
Pressures to 120 PSI  
Flow Range 2-8 Pints/Minute

**DESCRIPTION**

The TRIAD is designed to observe and indicate the flow of oil being distributed under pressure to a lubrication point.

**The Triple Advantage of TRIAD:**

- Accurate
- Easy to Read
- Does Not Leak

*Manifolding is available.*

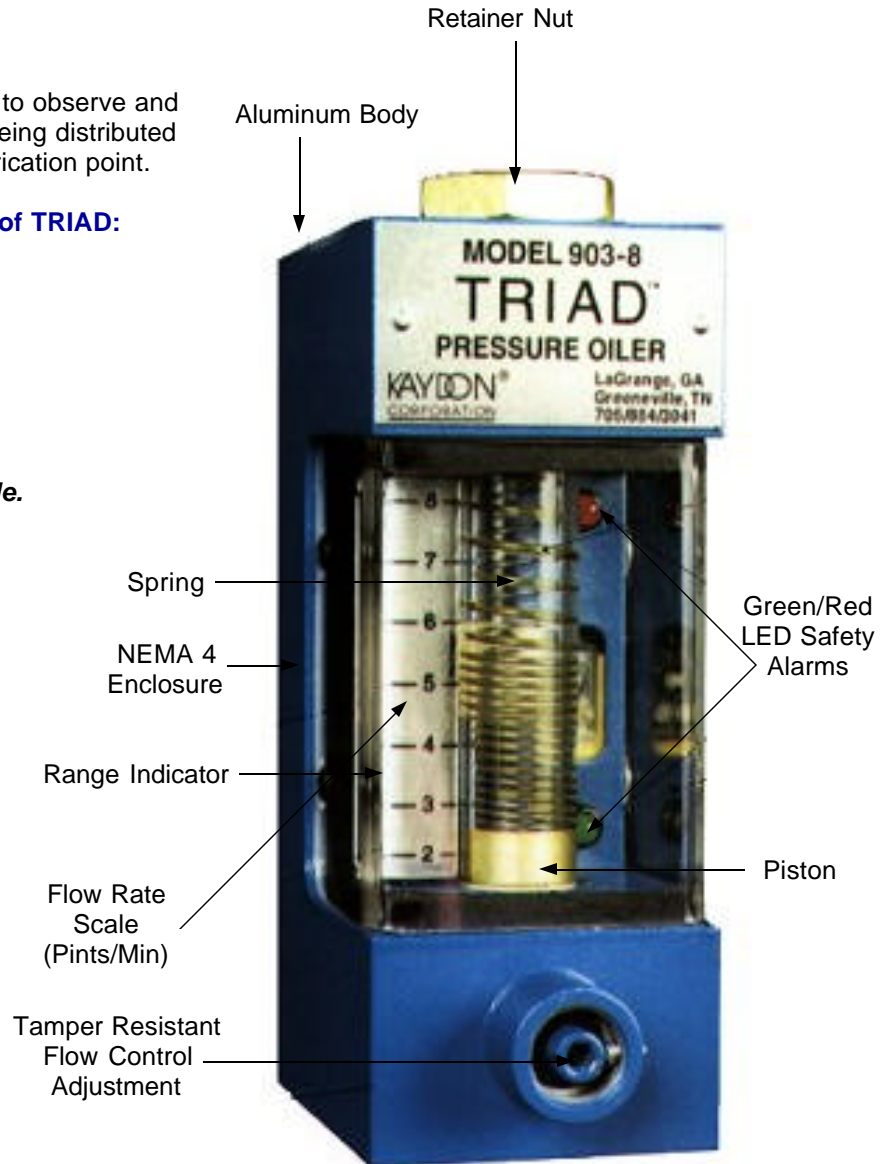
**APPLICATIONS**

- Paper Mills
- Steel Mills

**CONNECTIONS:**

INLET  
3/4" NPT

OUTLET  
1/2" NPT



*Model 903-8 shown with appropriate Flow Rate Scale to Max of 8 Pints/Minute.*

**KAYDON FILTRATION GROUP**

[www.kaydonfiltration.com](http://www.kaydonfiltration.com)

Instant Literature-by-Fax: [www.kaydonfilter.thomasregister.com](http://www.kaydonfilter.thomasregister.com)

1571 Lukken Industrial Drive West - LaGrange, GA 30240-5756

Phone: 706-884-3041 Fax: 706-883-6199

**800-241-2342 ext. 3**

ISO 9001-97



Certificate #002232

**MADE IN U.S.A.**

Turning Ideas Into Engineered Solutions

**KAYDON**  
FILTRATION GROUP

**TRIAD PRESSURE OILER**  
**MODEL 903-16 - 1/2" NPT**  
Pressures to 120 PSI  
Flow Range 4-16 Pints/Minute

**DESCRIPTION**

The TRIAD is designed to observe and indicate the flow of oil being distributed under pressure to a lubrication point.

**The Triple Advantage of TRIAD:**

- Accurate
- Easy to Read
- Does Not Leak

*Manifolding is available.*

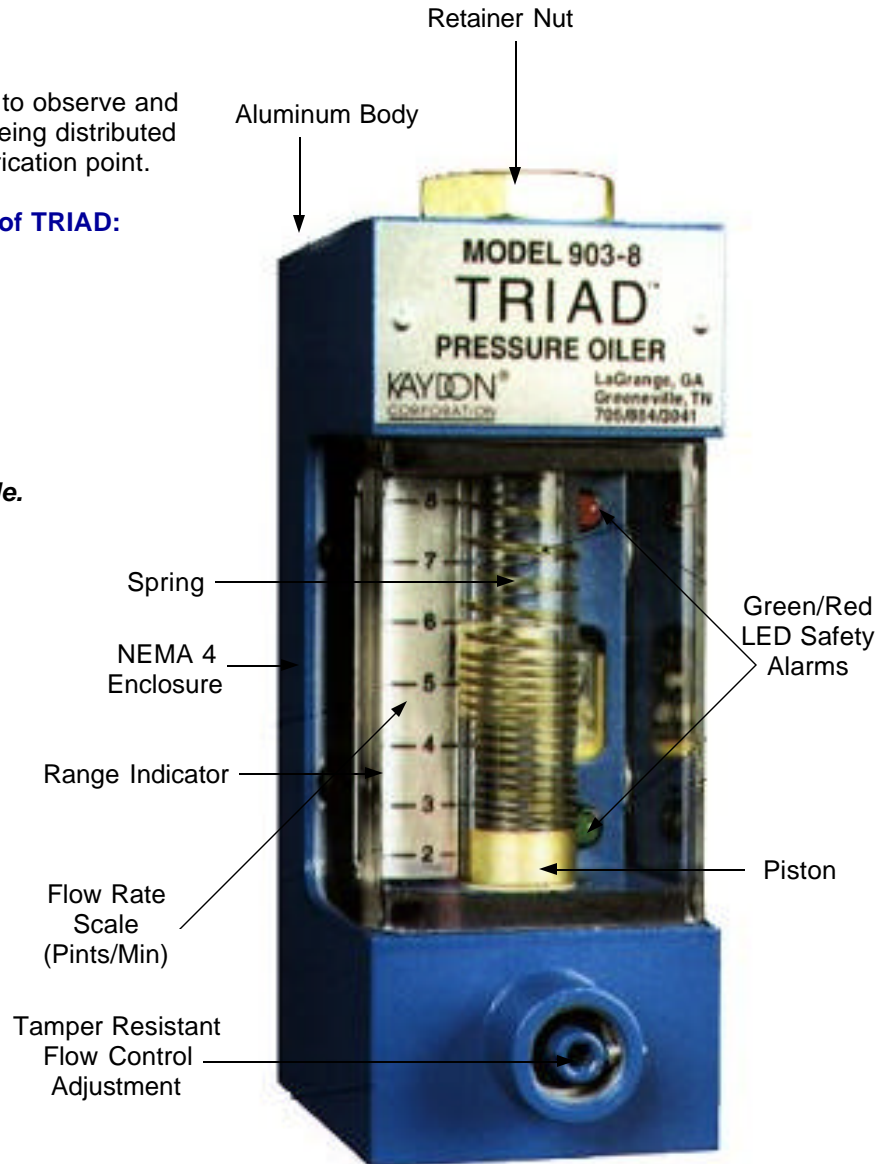
**APPLICATIONS**

- Paper Mills
- Steel Mills

**CONNECTIONS:**

INLET  
3/4" NPT

OUTLET  
1/2" NPT



*Model 903-8 shown with appropriate Flow Rate Scale to Max of 8 Pints/Minute.*

**KAYDON FILTRATION GROUP**

[www.kaydonfiltration.com](http://www.kaydonfiltration.com)

Instant Literature-by-Fax: [www.kaydonfilter.thomasregister.com](http://www.kaydonfilter.thomasregister.com)

1571 Lukken Industrial Drive West - LaGrange, GA 30240-5756

Phone: 706-884-3041 Fax: 706-883-6199

**800-241-2342 ext. 3**

ISO 9001-97



Certificate #002232

**MADE IN U.S.A.**

#### DESCRIPTION

The Model 902A Pressure Feed Oiler is a combination of a metering valve and a flow indicator. It is used for the distribution and supply of oil under pressure to the points of use, such as bearings and gears.

It is particularly useful where several lubrication points are served from the same piping manifold. The oilers can be clustered in easily accessible locations and oil can be piped up to remote or inaccessible points through the discharge tubing.

#### FEATURES

- Accuracy uncommon to this type of equipment. Tests show repeatability of indications to be within 5%.
- Indicator ring is visible even in dark oils, as a Teflon band remains in contact with the glass tube.
- The indication of oil flow rate is not affected by viscosity changes of oil within the specified range, therefore temperature changes of oil will not affect the scale reading. The oil flow will be directly proportional to the manifold pressure, i.e. with an increase of pressure, the flow through the oiler will increase. The required flow through the oiler can be obtained by adjustment of the needle valve (adjusting screw).
- Compact design allows the close assembly of the oilers in a cluster.

#### Maximum pressure drop to obtain full scale readings:

Model 902A-2, 902A-4, 902A-8:	10 PSI
Model 902A-16:	12 PSI



#### APPLICATIONS

- Paper Mills
- Dryer Bearings
- Felt Roll Bearings
- Gears
- Compressor Bearings
- Lubrication Systems.

**See Page 2 for Specifications.**

#### KAYDON FILTRATION GROUP

[www.kaydonfiltration.com](http://www.kaydonfiltration.com)

Instant Literature-by-Fax: [www.kaydonfilter.thomasregister.com](http://www.kaydonfilter.thomasregister.com)

1571 Lukken Industrial Drive West - LaGrange, GA 30240-5756

Phone: 706-884-3041 Fax: 706-883-6199

**800-241-2342 ext. 3**

ISO 9001-97



Certificate #002232

**MADE IN U.S.A.**



Turning Ideas Into Engineered Solutions



**MODEL 902A-2  
PRESSURE OILER  
0.25-2.0 Pints Per Minute - Page 2**

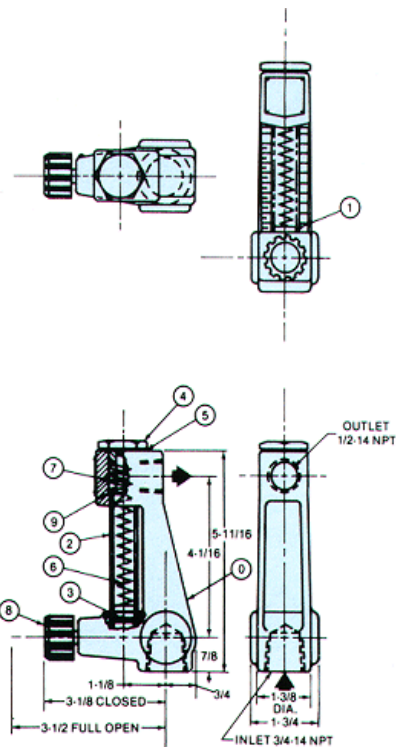
**SPECIFY GENERAL ASSEMBLY NUMBER 34N56  
WHEN ORDERING FOR 0.25-2.0 FLOW RATE**

**Specifications**

General Assembly Number	34N56
Flow: Pints Per Minute	0.25-2.0
Max Working Pressure	125 PSI
Max Operating Temperature	225°F
Oil Viscosity S.S.U.	100-1000

**Repair Parts List**

Item	Description	Part #
0	Complete Unit	34N56
1	Piston Assembly	34N57
2	Sight Glass	20N16
3	Screen	27N93
4	Retainer Nut	27N92
5	Retainer Washer	20N22
6	Spring, Piston	300082
7	Spring, Retainer	300077
8	Adjusting Screw Assembly	21N09
9	Glass, "O" Ring	300892(2)



**KAYDON FILTRATION GROUP**

[www.kaydonfiltration.com](http://www.kaydonfiltration.com)

Instant Literature-by-Fax: [www.kaydonfilter.thomasregister.com](http://www.kaydonfilter.thomasregister.com)

1571 Lukken Industrial Drive West - LaGrange, GA 30240-5756

Phone: 706-884-3041 Fax: 706-883-6199

**800-241-2342 ext. 3**

ISO 9001-97



Certificate #002232

**MADE IN U.S.A.**

#### DESCRIPTION

The Model 902A Pressure Feed Oiler is a combination of a metering valve and a flow indicator. It is used for the distribution and supply of oil under pressure to the points of use, such as bearings and gears.

It is particularly useful where several lubrication points are served from the same piping manifold. The oilers can be clustered in easily accessible locations and oil can be piped up to remote or inaccessible points through the discharge tubing.

#### FEATURES

- Accuracy uncommon to this type of equipment. Tests show repeatability of indications to be within 5%.
- Indicator ring is visible even in dark oils, as a Teflon band remains in contact with the glass tube.
- The indication of oil flow rate is not affected by viscosity changes of oil within the specified range, therefore temperature changes of oil will not affect the scale reading. The oil flow will be directly proportional to the manifold pressure, i.e. with an increase of pressure, the flow through the oiler will increase. The required flow through the oiler can be obtained by adjustment of the needle valve (adjusting screw).
- Compact design allows the close assembly of the oilers in a cluster.

#### Maximum pressure drop to obtain full scale readings:

Model 902A-2, 902A-4, 902A-8:	10 PSI
Model 902A-16:	12 PSI



#### APPLICATIONS

- Paper Mills
- Dryer Bearings
- Felt Roll Bearings
- Gears
- Compressor Bearings
- Lubrication Systems.

[See Page 2 for Specifications.](#)

#### KAYDON FILTRATION GROUP

[www.kaydonfiltration.com](http://www.kaydonfiltration.com)

Instant Literature-by-Fax: [www.kaydonfilter.thomasregister.com](http://www.kaydonfilter.thomasregister.com)

1571 Lukken Industrial Drive West - LaGrange, GA 30240-5756

Phone: 706-884-3041 Fax: 706-883-6199

**800-241-2342 ext. 3**

ISO 9001-97



Certificate #002232  
**MADE IN U.S.A.**



Turning Ideas Into Engineered Solutions

**KAYDON**  
FILTRATION GROUP

**MODEL 902A-4  
PRESSURE OILER  
0.5-4.0 Pints Per Minute - Page 2**

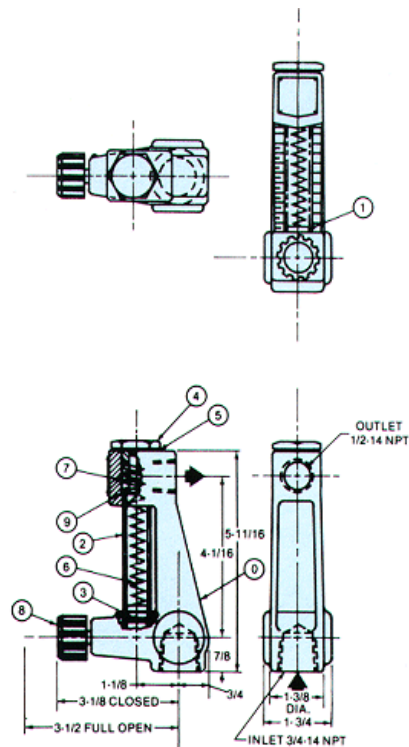
**SPECIFY GENERAL ASSEMBLY NUMBER 27N86  
WHEN ORDERING FOR 0.5-4.0 FLOW RATE**

**Specifications**

General Assembly Number	27N86
Flow: Pints Per Minute	0.5-4.0
Max Working Pressure	125 PSI
Max Operating Temperature	225°F
Oil Viscosity S.S.U.	100-1000

**Repair Parts List**

Item	Description	Part #
0	Complete Unit	27N86
1	Piston Assembly	27N97
2	Sight Glass	20N16
3	Screen	27N93
4	Retainer Nut	27N92
5	Retainer Washer	20N22
6	Spring, Piston	300082
7	Spring, Retainer	300077
8	Adjusting Screw Assembly	21N09
9	Glass, "O" Ring	300892(2)



**KAYDON FILTRATION GROUP**

[www.kaydonfiltration.com](http://www.kaydonfiltration.com)

Instant Literature-by-Fax: [www.kaydonfilter.thomasregister.com](http://www.kaydonfilter.thomasregister.com)

1571 Lukken Industrial Drive West - LaGrange, GA 30240-5756

Phone: 706-884-3041 Fax: 706-883-6199

**800-241-2342 ext. 3**

ISO 9001-97



Certificate #002232

**MADE IN U.S.A.**

#### DESCRIPTION

The Model 902A Pressure Feed Oiler is a combination of a metering valve and a flow indicator. It is used for the distribution and supply of oil under pressure to the points of use, such as bearings and gears.

It is particularly useful where several lubrication points are served from the same piping manifold. The oilers can be clustered in easily accessible locations and oil can be piped up to remote or inaccessible points through the discharge tubing.

#### FEATURES

- Accuracy uncommon to this type of equipment. Tests show repeatability of indications to be within 5%.
- Indicator ring is visible even in dark oils, as a Teflon band remains in contact with the glass tube.
- The indication of oil flow rate is not affected by viscosity changes of oil within the specified range, therefore temperature changes of oil will not affect the scale reading. The oil flow will be directly proportional to the manifold pressure, i.e. with an increase of pressure, the flow through the oiler will increase. The required flow through the oiler can be obtained by adjustment of the needle valve (adjusting screw).
- Compact design allows the close assembly of the oilers in a cluster.

#### Maximum pressure drop to obtain full scale readings:

Model 902A-2, 902A-4, 902A-8:	10 PSI
Model 902A-16:	12 PSI



#### APPLICATIONS

- Paper Mills
- Dryer Bearings
- Felt Roll Bearings
- Gears
- Compressor Bearings
- Lubrication Systems.

**See Page 2 for Specifications.**

#### KAYDON FILTRATION GROUP

[www.kaydonfiltration.com](http://www.kaydonfiltration.com)

Instant Literature-by-Fax: [www.kaydonfilter.thomasregister.com](http://www.kaydonfilter.thomasregister.com)

1571 Lukken Industrial Drive West - LaGrange, GA 30240-5756

Phone: 706-884-3041 Fax: 706-883-6199

**800-241-2342 ext. 3**

ISO 9001-97



Certificate #002232

**MADE IN U.S.A.**



Turning Ideas Into Engineered Solutions



**MODEL 902A-8  
PRESSURE OILER  
1.0-8.0 Pints Per Minute - Page 2**

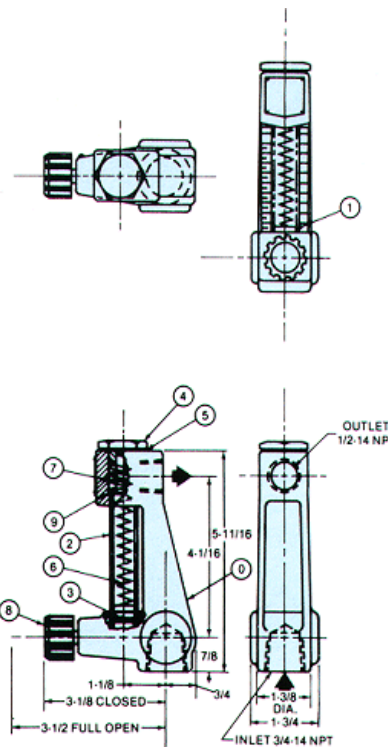
**SPECIFY GENERAL ASSEMBLY NUMBER 27N87  
WHEN ORDERING FOR 1.0-8.0 FLOW RATE**

**Specifications**

General Assembly Number	27N87
Flow: Pints Per Minute	1.0-8.0
Max Working Pressure	125 PSI
Max Operating Temperature	225°F
Oil Viscosity S.S.U.	100-1500

**Repair Parts List**

Item	Description	Part #
0	Complete Unit	27N87
1	Piston Assembly	27N98
2	Sight Glass	20N16
3	Screen	27N93
4	Retainer Nut	27N92
5	Retainer Washer	20N22
6	Spring, Piston	300082
7	Spring, Retainer	300077
8	Adjusting Screw Assembly	21N09
9	Glass, "O" Ring	300892(2)



**KAYDON FILTRATION GROUP**

[www.kaydonfiltration.com](http://www.kaydonfiltration.com)

Instant Literature-by-Fax: [www.kaydonfilter.thomasregister.com](http://www.kaydonfilter.thomasregister.com)

1571 Lukken Industrial Drive West - LaGrange, GA 30240-5756

Phone: 706-884-3041 Fax: 706-883-6199

**800-241-2342 ext. 3**

ISO 9001-97



Certificate #002232

**MADE IN U.S.A.**

#### DESCRIPTION

The Model 902A Pressure Feed Oiler is a combination of a metering valve and a flow indicator. It is used for the distribution and supply of oil under pressure to the points of use, such as bearings and gears.

It is particularly useful where several lubrication points are served from the same piping manifold. The oilers can be clustered in easily accessible locations and oil can be piped up to remote or inaccessible points through the discharge tubing.

#### FEATURES

- Accuracy uncommon to this type of equipment. Tests show repeatability of indications to be within 5%.
- Indicator ring is visible even in dark oils, as a Teflon band remains in contact with the glass tube.
- The indication of oil flow rate is not affected by viscosity changes of oil within the specified range, therefore temperature changes of oil will not affect the scale reading. The oil flow will be directly proportional to the manifold pressure, i.e. with an increase of pressure, the flow through the oiler will increase. The required flow through the oiler can be obtained by adjustment of the needle valve (adjusting screw).
- Compact design allows the close assembly of the oilers in a cluster.

#### Maximum pressure drop to obtain full scale readings:

Model 902A-2, 902A-4, 902A-8:	10 PSI
Model 902A-16:	12 PSI



#### APPLICATIONS

- Paper Mills
- Dryer Bearings
- Felt Roll Bearings
- Gears
- Compressor Bearings
- Lubrication Systems.

[See Page 2 for Specifications.](#)

#### KAYDON FILTRATION GROUP

[www.kaydonfiltration.com](http://www.kaydonfiltration.com)

Instant Literature-by-Fax: [www.kaydonfilter.thomasregister.com](http://www.kaydonfilter.thomasregister.com)

1571 Lukken Industrial Drive West - LaGrange, GA 30240-5756

Phone: 706-884-3041 Fax: 706-883-6199

**800-241-2342 ext. 3**

ISO 9001-97



Certificate #002232  
**MADE IN U.S.A.**



Turning Ideas Into Engineered Solutions



**MODEL 902A-16  
PRESSURE OILER  
2.0-16.0 Pints Per Minute - Page 2**

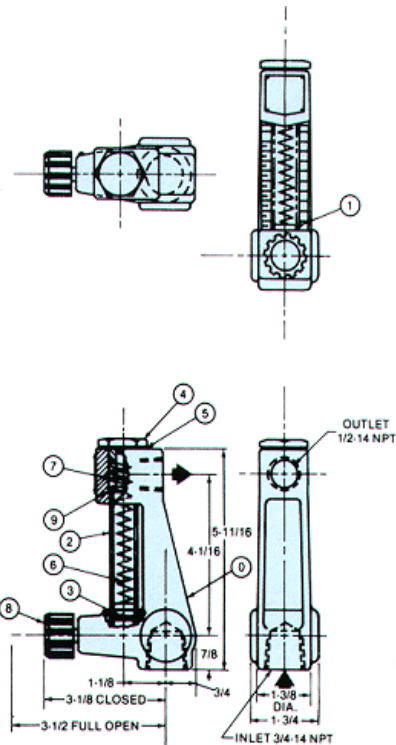
**SPECIFY GENERAL ASSEMBLY NUMBER 27N88  
WHEN ORDERING FOR 2.0-16.0 FLOW RATE**

**Specifications**

General Assembly Number	27N88
Flow: Pints Per Minute	2.0-16.0
Max Working Pressure	125 PSI
Max Operating Temperature	225°F
Oil Viscosity S.S.U.	100-2000

**Repair Parts List**

Item	Description	Part #
0	Complete Unit	27N88
1	Piston Assembly	27N99
2	Sight Glass	20N16
3	Screen	27N93
4	Retainer Nut	27N92
5	Retainer Washer	20N22
6	Spring, Piston	300082
7	Spring, Retainer	300077
8	Adjusting Screw Assembly	21N09
9	Glass, "O" Ring	300892(2)



**KAYDON FILTRATION GROUP**  
[www.kaydonfiltration.com](http://www.kaydonfiltration.com)  
**Instant Literature-by-Fax: [www.kaydonfilter.thomasregister.com](http://www.kaydonfilter.thomasregister.com)**  
 1571 Lukken Industrial Drive West - LaGrange, GA 30240-5756  
 Phone: 706-884-3041 Fax: 706-883-6199  
**800-241-2342 ext. 3**

ISO 9001-97



Certificate #002232  
**MADE IN U.S.A.**

### DESCRIPTION

The Gravity Sight Feed Oiler affords a clear view and fine control of oil flowing, by gravity, to a lubrication point. The double window design permits observation of the oil stream from either side of the oiler.

### FEATURES

- Body vent prevents the fogging of the windows.
- Optional single installation; or oilers may be manifolded in batteries to form a central lubrication control point. They are especially useful for equipment having many lubrication points.
- Cast iron body construction with glass windows, bronze fittings and a blue enamel finish.
- Maximum working pressure of 125 psi at the maximum operating temperature of 225°F.
- Flow through the oiler is relative to the adjustment of the screw for various viscosities of oil at different supply pressures. (See Flow Rate Adjustment table on Page 2).



### APPLICATIONS

- Paper Mill Oiling Systems
- Steam Engines
- Gas Engines
- Related Industrial Applications.

### INSTALLATION

The Model 4B Oiler must be installed in a vertical position, as shown in the drawing on page 2. To facilitate service and prevent possible starvation of lubricant to a bearing, no more than four oilers should be manifolded together. When the oiler is located at the end of the supply manifold, i.e. with no equipment installed on the downstream side of the oiler, the unused connection must be closed with a suitable 1/2" pipe plug.

### OPERATION

Start the flow of oil through the system. Turn the oiler adjusting screw (1) to open the oiler. Adjust the screw until the described flow is obtained. Use the accompanying graphs (see page 2) as a guide to the adjustment of the oiler.

Note: Adjust the oiler by hand only. Never use wrenches, etc., to turn the adjusting screw.

### MAINTENANCE

This oiler should give trouble-free service with little or no maintenance required. It may be desirable to clean the windows periodically. To do so, close the adjusting screw to stop the flow through the oiler. Insert a pointed tool into the hold in the body (X) to push the "O" ring (7) away from the body. By pulling the loop thus formed, the "O" ring may be easily withdrawn from the body. To facilitate the removal of the glass window, touch a piece of adhesive tape to the glass and pull gently. Clean glass with a soft cloth. Inspect "O" ring and replace if worn or damaged. Reassemble parts in reverse sequence.

**See Page 2 for Specifications, Graphs and Repair Parts List.**

### KAYDON FILTRATION GROUP

[www.kaydonfiltration.com](http://www.kaydonfiltration.com)

Instant Literature-by-Fax: [www.kaydonfilter.thomasregister.com](http://www.kaydonfilter.thomasregister.com)

1571 Lukken Industrial Drive West - LaGrange, GA 30240-5756

Phone: 706-884-3041 Fax: 706-883-6199

**800-241-2342 ext. 3**

ISO 9001-97

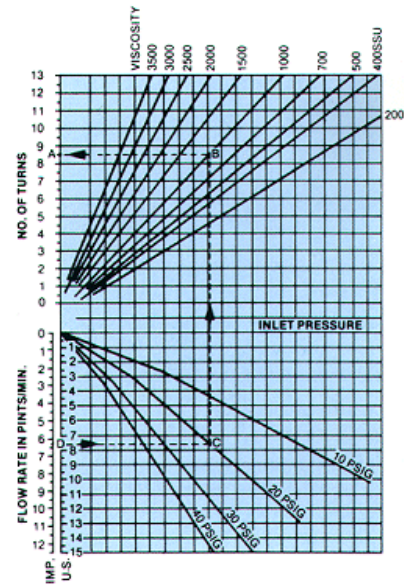
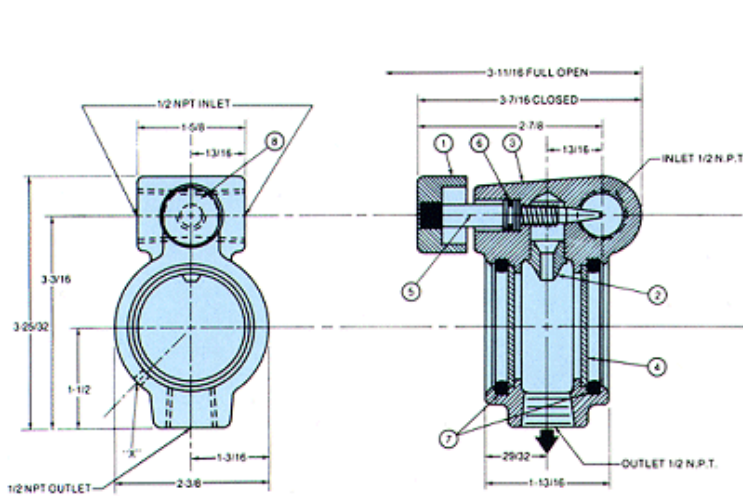


Certificate #002232  
**MADE IN U.S.A.**

**WHEN ORDERING REPAIR PARTS, GIVE THE FIGURE NUMBER AND NAME FOUND ON THE NAMEPLATE, IN ADDITION TO THE SYMBOL NUMBER, PART NUMBER AND NOMENCLATURE OF THE PIECE REQUIRED, AS FOUND IN THE PARTS LIST BELOW.**

**Repair Parts List**

Item	Description	Part #	Amount Required
1	Needle Valve Stem Assembly (includes 21N10 Knob)	20N84	1
2	Nozzle 9/16" diameter x 5/8" lg. Free cutting brass	21N01	1
3	Oiler Body	21N04	1
4	Sight Glass	03Z32	2
5	Drive Screw	29920	1
6	"O" Ring - 1/2" diameter	300273	1
7	"O" Ring - 2" diameter	300874	2
8	Decal	20N83	1



**Flow Rate Adjustment Example:**

Select the desired flow rate of 7½ US pints/minute (D) on scale pints/minute, and known inlet pressure of 20 PSIG © and known viscosity of 1000 SSSU (B) and read the correct number of turns of control knob on scale (A) to give the required flow rate.

**KAYDON FILTRATION GROUP**

www.kaydonfiltration.com

Instant Literature-by-Fax: www.kaydonfilter.thomasregister.com

1571 Lukken Industrial Drive West - LaGrange, GA 30240-5756

Phone: 706-884-3041 Fax: 706-883-6199

800-241-2342 ext. 3

ISO 9001-97



Certificate #002232

MADE IN U.S.A.

## DESCRIPTION

The Kaydon Model 811A vane type indicator utilizes a single observation window and a flow activated vane to furnish a constant readout of liquid flow, clarity and color.

## FEATURES

- Spring actuated vane.
- Clear window for easy observation of liquid flow.
- Observation of vane positioning gives an approximate indication of the rate of flow. The vane assumes a position at right angles to the center line of the pipe when there is no flow, and moves at an oblique angle when liquid is flowing.
- Designed for easy observation of flow from either the right or left, up or down.
- Brass construction with wire brushed exterior finish.
- Withstands a working pressure of 125 PSI.
- Standard heat treated glass window meets MIL-G-2697 and is furnished with the unit.



## APPLICATIONS

- Transformer Cooling Water Lines
- Diesel Engine Jacket Water Lines
- Hydro-Electric Turbine Oil Lines
- Generator Oil Lines
- Steel Mill Machinery
- Other Equipment

[See Page 2 for Specifications.](#)

## KAYDON FILTRATION GROUP

[www.kaydonfiltration.com](http://www.kaydonfiltration.com)

Instant Literature-by-Fax: [www.kaydonfilter.thomasregister.com](http://www.kaydonfilter.thomasregister.com)

1571 Lukken Industrial Drive West - LaGrange, GA 30240-5756

Phone: 706-884-3041 Fax: 706-883-6199

**800-241-2342 ext. 3**

ISO 9001-97

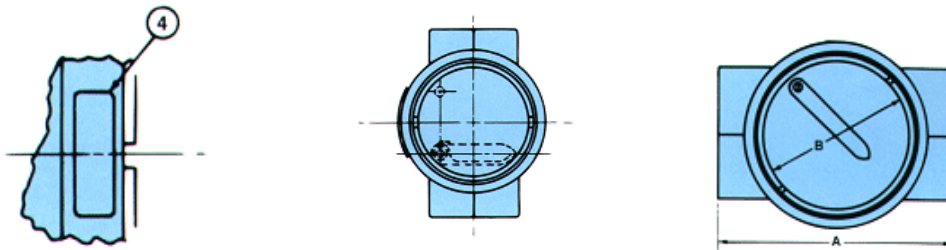


Certificate #002232

**MADE IN U.S.A.**

**SPECIFICATIONS**

**SPECIFY GENERAL ASSEMBLY NUMBER 35B41 WHEN ORDERING FOR 1/2" NPT OPENING**

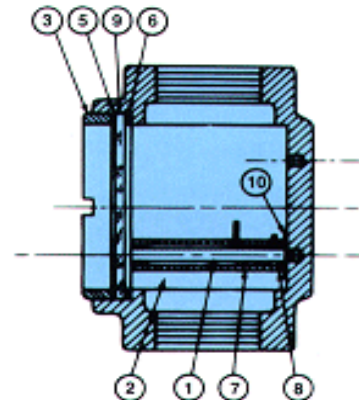


**Dimensions**

General Assembly Number	35B41
Pipe Size (NPT)	1/2"
Dimension A	3"
Dimension B	1 5/8"
Front to Back	2 3/16"

**Repair Parts List**

Item Number	Description	Part Number
1	Screw	35B57
2	Flap	37B61
3	Ring	87856
4	Name Plate	06Z48
5	Gasket (vellumoid)	82036
6	Gasket (cork)	81977
7	Spring	82304
8	Spacer	37B56
9	Glass-Heat Treat	88460
10	Brass Washer	29255



*Notes:*

1. For L.H. Assemblies, flap is reversed.
2. Tested at PSI hydraulic pressure.

**See Page 1 for Description, Applications and Features.**

**KAYDON FILTRATION GROUP**

[www.kaydonfiltration.com](http://www.kaydonfiltration.com)

Instant Literature-by-Fax: [www.kaydonfilter.thomasregister.com](http://www.kaydonfilter.thomasregister.com)

1571 Lukken Industrial Drive West - LaGrange, GA 30240-5756

Phone: 706-884-3041 Fax: 706-883-6199

**800-241-2342 ext. 3**

ISO 9001-97



Certificate #002232

**MADE IN U.S.A.**

## DESCRIPTION

The Kaydon Model 811A vane type indicator utilizes a single observation window and a flow activated vane to furnish a constant readout of liquid flow, clarity and color.

## FEATURES

- Spring actuated vane.
- Clear window for easy observation of liquid flow.
- Observation of vane positioning gives an approximate indication of the rate of flow. The vane assumes a position at right angles to the center line of the pipe when there is no flow, and moves at an oblique angle when liquid is flowing.
- Designed for easy observation of flow from either the right or left, up or down.
- Brass construction with wire brushed exterior finish.
- Withstands a working pressure of 125 PSI.
- Standard heat treated glass window meets MIL-G-2697 and is furnished with the unit.



## APPLICATIONS

- Transformer Cooling Water Lines
- Diesel Engine Jacket Water Lines
- Hydro-Electric Turbine Oil Lines
- Generator Oil Lines
- Steel Mill Machinery
- Other Equipment

[See Page 2 for Specifications.](#)

## KAYDON FILTRATION GROUP

[www.kaydonfiltration.com](http://www.kaydonfiltration.com)

Instant Literature-by-Fax: [www.kaydonfilter.thomasregister.com](http://www.kaydonfilter.thomasregister.com)

1571 Lukken Industrial Drive West - LaGrange, GA 30240-5756

Phone: 706-884-3041 Fax: 706-883-6199

**800-241-2342 ext. 3**

ISO 9001-97



Certificate #002232

**MADE IN U.S.A.**



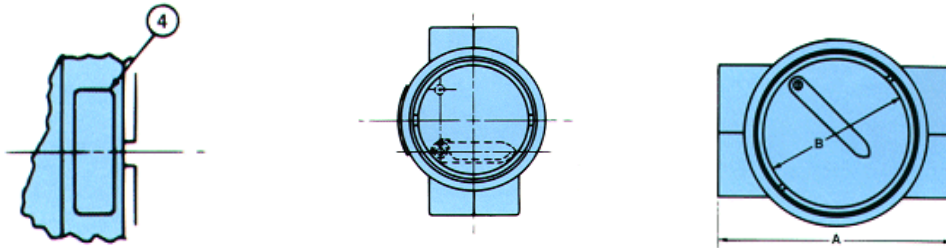
Turning Ideas Into Engineered Solutions

**KAYDON**  
FILTRATION GROUP

**MODEL 811A  
VANE TYPE INDICATOR  
3/4" NPT - Page 2**

**SPECIFICATIONS**

**SPECIFY GENERAL ASSEMBLY NUMBER 35B46 WHEN ORDERING FOR 3/4" NPT OPENING**

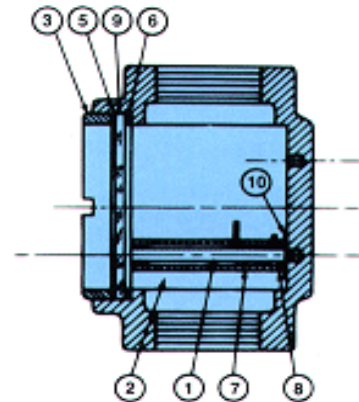


**Dimensions**

General Assembly Number	35B46
Pipe Size (NPT)	3/4"
Dimension A	3 3/4"
Dimension B	1 7/8"
Front to Back	2 13/16"

**Repair Parts List**

Item Number	Description	Part Number
1	Screw	37B56
2	Flap	37B62
3	Ring	87857
4	Name Plate	06Z48
5	Gasket (vellumoid)	82534
6	Gasket (cork)	82532
7	Spring	82693
8	Spacer	37B56
9	Glass-Heat Treat	88520
10	Brass Washer	29255



**Notes:**

1. For L.H. Assemblies, flap is reversed.
2. Tested at PSI hydraulic pressure.

**See Page 1 for Description, Applications and Features.**

**KAYDON FILTRATION GROUP**

[www.kaydonfiltration.com](http://www.kaydonfiltration.com)

Instant Literature-by-Fax: [www.kaydonfilter.thomasregister.com](http://www.kaydonfilter.thomasregister.com)

1571 Lukken Industrial Drive West - LaGrange, GA 30240-5756

Phone: 706-884-3041 Fax: 706-883-6199

**800-241-2342 ext. 3**

ISO 9001-97



Certificate #002232

**MADE IN U.S.A.**

## DESCRIPTION

The Kaydon Model 811A vane type indicator utilizes a single observation window and a flow activated vane to furnish a constant readout of liquid flow, clarity and color.

## FEATURES

- Spring actuated vane.
- Clear window for easy observation of liquid flow.
- Observation of vane positioning gives an approximate indication of the rate of flow. The vane assumes a position at right angles to the center line of the pipe when there is no flow, and moves at an oblique angle when liquid is flowing.
- Designed for easy observation of flow from either the right or left, up or down.
- Brass construction with wire brushed exterior finish.
- Withstands a working pressure of 125 PSI.
- Standard heat treated glass window meets MIL-G-2697 and is furnished with the unit.



## APPLICATIONS

- Transformer Cooling Water Lines
- Diesel Engine Jacket Water Lines
- Hydro-Electric Turbine Oil Lines
- Generator Oil Lines
- Steel Mill Machinery
- Other Equipment

[See Page 2 for Specifications.](#)

### KAYDON FILTRATION GROUP

[www.kaydonfiltration.com](http://www.kaydonfiltration.com)

Instant Literature-by-Fax: [www.kaydonfilter.thomasregister.com](http://www.kaydonfilter.thomasregister.com)

1571 Lukken Industrial Drive West - LaGrange, GA 30240-5756

Phone: 706-884-3041 Fax: 706-883-6199

**800-241-2342 ext. 3**

ISO 9001-97



Certificate #002232

**MADE IN U.S.A.**



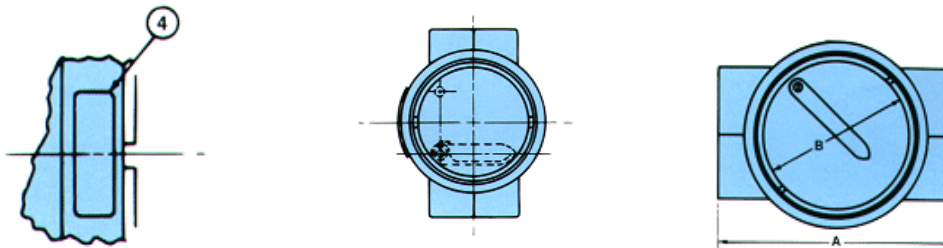
Turning Ideas Into Engineered Solutions



# MODEL 811A VANE TYPE INDICATOR 1" NPT - Page 2

## SPECIFICATIONS

**SPECIFY GENERAL ASSEMBLY NUMBER 35B47 WHEN ORDERING FOR 1" NPT OPENING**

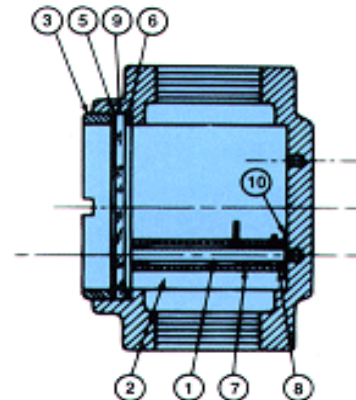


### Dimensions

General Assembly Number	35B47
Pipe Size (NPT)	1"
Dimension A	3 3/4"
Dimension B	1 7/8"
Front to Back	2 13/16"

### Repair Parts List

Item Number	Description	Part Number
1	Screw	37B56
2	Flap	37B62
3	Ring	87858
4	Name Plate	06Z48
5	Gasket (vellumoid)	82534
6	Gasket (cork)	82532
7	Spring	82693
8	Spacer	37B56
9	Glass-Heat Treat	88520
10	Brass Washer	29255



#### Notes:

1. For L.H. Assemblies, flap is reversed.
2. Tested at PSI hydraulic pressure.

**See Page 1 for Description, Applications and Features.**

## KAYDON FILTRATION GROUP

[www.kaydonfiltration.com](http://www.kaydonfiltration.com)

Instant Literature-by-Fax: [www.kaydonfilter.thomasregister.com](http://www.kaydonfilter.thomasregister.com)

1571 Lukken Industrial Drive West - LaGrange, GA 30240-5756

Phone: 706-884-3041 Fax: 706-883-6199

**800-241-2342 ext. 3**

ISO 9001-97



Certificate #002232  
**MADE IN U.S.A.**

## DESCRIPTION

The Kaydon Model 811A vane type indicator utilizes a single observation window and a flow activated vane to furnish a constant readout of liquid flow, clarity and color.

## FEATURES

- Spring actuated vane.
- Clear window for easy observation of liquid flow.
- Observation of vane positioning gives an approximate indication of the rate of flow. The vane assumes a position at right angles to the center line of the pipe when there is no flow, and moves at an oblique angle when liquid is flowing.
- Designed for easy observation of flow from either the right or left, up or down.
- Brass construction with wire brushed exterior finish.
- Withstands a working pressure of 125 PSI.
- Standard heat treated glass window meets MIL-G-2697 and is furnished with the unit.



## APPLICATIONS

- Transformer Cooling Water Lines
- Diesel Engine Jacket Water Lines
- Hydro-Electric Turbine Oil Lines
- Generator Oil Lines
- Steel Mill Machinery
- Other Equipment

[See Page 2 for Specifications.](#)

## KAYDON FILTRATION GROUP

[www.kaydonfiltration.com](http://www.kaydonfiltration.com)

Instant Literature-by-Fax: [www.kaydonfilter.thomasregister.com](http://www.kaydonfilter.thomasregister.com)

1571 Lukken Industrial Drive West - LaGrange, GA 30240-5756

Phone: 706-884-3041 Fax: 706-883-6199

**800-241-2342 ext. 3**

ISO 9001-97

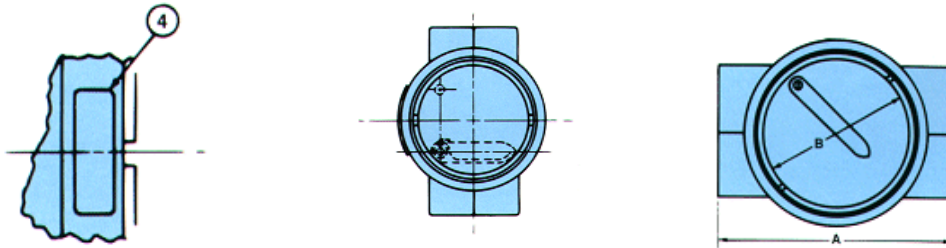


Certificate #002232

**MADE IN U.S.A.**

**SPECIFICATIONS**

**SPECIFY GENERAL ASSEMBLY NUMBER 35B62 WHEN ORDERING FOR 2" NPT OPENING**

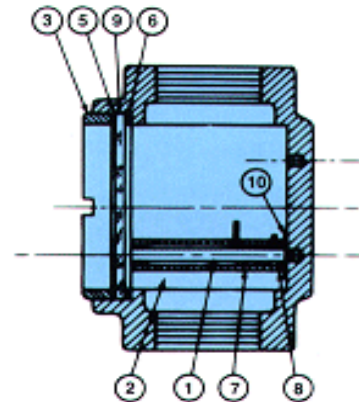


**Dimensions**

General Assembly Number	35B62
Pipe Size (NPT)	2"
Dimension A	6 1/2"
Dimension B	3 7/8"
Front to Back	4 11/16"

**Repair Parts List**

Item Number	Description	Part Number
1	Screw	37B60
2	Flap	37B64
3	Ring	87859
4	Name Plate	06Z48
5	Gasket (vellumoid)	83551
6	Gasket (cork)	82550
7	Spring	82692
8	Spacer	37B56
9	Glass-Heat Treat	88522
10	Brass Washer	29255



*Notes:*

1. For L.H. Assemblies, flap is reversed.
2. Tested at PSI hydraulic pressure.

**See Page 1 for Description, Applications and Features.**

**KAYDON FILTRATION GROUP**

[www.kaydonfiltration.com](http://www.kaydonfiltration.com)

Instant Literature-by-Fax: [www.kaydonfilter.thomasregister.com](http://www.kaydonfilter.thomasregister.com)

1571 Lukken Industrial Drive West - LaGrange, GA 30240-5756

Phone: 706-884-3041 Fax: 706-883-6199

**800-241-2342 ext. 3**

ISO 9001-97



Certificate #002232

**MADE IN U.S.A.**

**DIMENSIONS**

**Threaded Model 55B—3/4”**

“A” - End to End	4”
“B” - Face to Face	2 1/2”
“C” - Visibility	1 5/8”
“D” - I.D. of Inlet Nozzle	1 1/16”
“E” - Across Flats of Hex	1 1/2”



**Model 55B**

**Working Pressure—150 psi, max. temperature 225°F.**

All Flow Sights are equipped with heat treated glass windows which meet MIL-G-2697. Units feature a simplified window closure design which incorporates a retaining ring and a positive “O” ring seal, and are constructed to withstand a working pressure of 150 PSIG.

The Model 55B is constructed of cast bronze and finished by acid dip.

**SPECIFICATONS**

**SPECIFY GENERAL ASSEMBLY NUMBER 34N12 WHEN ORDERING FOR 3/4” NPT OPENING**

**REPAIR PARTS LIST**

Item	Description	Number Required	Part Number
1	Body, Bronze	1 Required	32N04
2	O-Ring	2 Required	300217
3	Sight Glass	2 Required	88462
4	Washer	2 Required	32N40
5	Retaining Ring	2 Required	17944

**KAYDON FILTRATION GROUP**

[www.kaydonfiltration.com](http://www.kaydonfiltration.com)

Instant Literature-by-Fax: [www.kaydonfilter.thomasregister.com](http://www.kaydonfilter.thomasregister.com)

1571 Lukken Industrial Drive West - LaGrange, GA 30240-5756

Phone: 706-884-3041 Fax: 706-883-6199

**800-241-2342 ext. 3**

ISO 9001-97



Certificate #002232

**MADE IN U.S.A.**

**DIMENSIONS**

**Threaded Model 55B—1”**

“A” - End to End	4 1/4”
“B” - Face to Face	3”
“C” - Visibility	1 3/4”
“D” - I.D. of Inlet Nozzle	13/16”
“E” - Across Flats of Hex	1 13/16”

**Working Pressure—150 psi, max. temperature 225°F.**

All Flow Sights are equipped with heat treated glass windows which meet MIL-G-2697. Units feature a simplified window closure design which incorporates a retaining ring and a positive “O” ring seal, and are constructed to withstand a working pressure of 150 PSIG.

The Model 55B is constructed of cast bronze and finished by acid dip.



**Model 55B**

**SPECIFICATONS**

**SPECIFY GENERAL ASSEMBLY NUMBER 34N13 WHEN ORDERING FOR 1” NPT OPENING**

**REPAIR PARTS LIST**

Item	Description	Number Required	Part Number
1	Body, Bronze	1 Required	32N06
2	O-Ring	2 Required	300219
3	Sight Glass	2 Required	88464
4	Washer	2 Required	32N41
5	Retaining Ring	2 Required	13827

**KAYDON FILTRATION GROUP**

[www.kaydonfiltration.com](http://www.kaydonfiltration.com)

Instant Literature-by-Fax: [www.kaydonfilter.thomasregister.com](http://www.kaydonfilter.thomasregister.com)

1571 Lukken Industrial Drive West - LaGrange, GA 30240-5756

Phone: 706-884-3041 Fax: 706-883-6199

**800-241-2342 ext. 3**

ISO 9001-97



Certificate #002232

**MADE IN U.S.A.**

**DIMENSIONS**

**Threaded Model 55B—1 1/2"**

"A" - End to End	4 7/8"
"B" - Face to Face	3 3/16"
"C" - Visibility	1 3/4"
"D" - I.D. of Inlet Nozzle	1 5/32"
"E" - Across Flats of Hex	2 1/2"

**Working Pressure—150 psi, max. temperature 225°F.**

All Flow Sights are equipped with heat treated glass windows which meet MIL-G-2697. Units feature a simplified window closure design which incorporates a retaining ring and a positive "O" ring seal, and are constructed to withstand a working pressure of 150 PSIG.

The Model 55B is constructed of cast bronze and finished by acid dip.



**Model 55B**

**SPECIFICATONS**

**SPECIFY GENERAL ASSEMBLY NUMBER 34N15 WHEN ORDERING FOR 1 1/2" NPT OPENING**

**REPAIR PARTS LIST**

Item	Description	Number Required	Part Number
1	Body, Bronze	1 Required	32N10
2	O-Ring	2 Required	300219
3	Sight Glass	2 Required	88464
4	Washer	2 Required	32N41
5	Retaining Ring	2 Required	13827

**KAYDON FILTRATION GROUP**

[www.kaydonfiltration.com](http://www.kaydonfiltration.com)

Instant Literature-by-Fax: [www.kaydonfilter.thomasregister.com](http://www.kaydonfilter.thomasregister.com)

1571 Lukken Industrial Drive West - LaGrange, GA 30240-5756

Phone: 706-884-3041 Fax: 706-883-6199

**800-241-2342 ext. 3**

ISO 9001-97



Certificate #002232  
**MADE IN U.S.A.**

Turning Ideas Into Engineered Solutions



## DOUBLE WINDOW FLOW SIGHT INDICATORS

### DIMENSIONS

#### Threaded Model 55B—2”

“A” - End to End	7 1/6”
“B” - Face to Face	4 1/4”
“C” - Visibility	2 13/16”
“D” - I.D. of Inlet Nozzle	1 5/8”
“E” - Across Flats of Hex	3 3/8”

**Working Pressure—150 psi, max. temperature 225°F.**

All Flow Sights are equipped with heat treated glass windows which meet MIL-G-2697. Units feature a simplified window closure design which incorporates a retaining ring and a positive “O” ring seal, and are constructed to withstand a working pressure of 150 PSIG.

The Model 55B is constructed of cast bronze and finished by acid dip.



**Model 55B**

### SPECIFICATONS

**SPECIFY GENERAL ASSEMBLY NUMBER 34N16 WHEN ORDERING FOR 2” NPT OPENING**

#### REPAIR PARTS LIST

Item	Description	Number Required	Part Number
1	Body, Bronze	1 Required	32N12
2	O-Ring	2 Required	300884
3	Sight Glass	2 Required	88524
4	Washer	2 Required	32N42
5	Retaining Ring	2 Required	13828

### KAYDON FILTRATION GROUP

[www.kaydonfiltration.com](http://www.kaydonfiltration.com)

Instant Literature-by-Fax: [www.kaydonfilter.thomasregister.com](http://www.kaydonfilter.thomasregister.com)

1571 Lukken Industrial Drive West - LaGrange, GA 30240-5756

Phone: 706-884-3041 Fax: 706-883-6199

**800-241-2342 ext. 3**

ISO 9001-97



Certificate #002232

**MADE IN U.S.A.**

## DESCRIPTION

Kaydon Model 825 Overflow Sights are designed for convenient observation of liquid flow and are extremely practical for maintaining a desired or fixed level of liquid circulating in a system.

## FEATURES

- Clear glass viewing walls, which are easily removed for occasional cleaning.
- Equipped with metal top and 1/2" NPT connection for vacuum operating installations.
- Top is easily tightened or removed.
- Cast iron body construction with white enamel interior and a Kaydon blue exterior.



## Applications

- Bearing Reservoirs
- Gear Cases
- Turbine Reservoirs
- Other Equipment

[See Page 2 for Specifications.](#)

### KAYDON FILTRATION GROUP

[www.kaydonfiltration.com](http://www.kaydonfiltration.com)

Instant Literature-by-Fax: [www.kaydonfilter.thomasregister.com](http://www.kaydonfilter.thomasregister.com)

1571 Lukken Industrial Drive West - LaGrange, GA 30240-5756

Phone: 706-884-3041 Fax: 706-883-6199

**800-241-2342 ext. 3**

ISO 9001-97



Certificate #002232

**MADE IN U.S.A.**



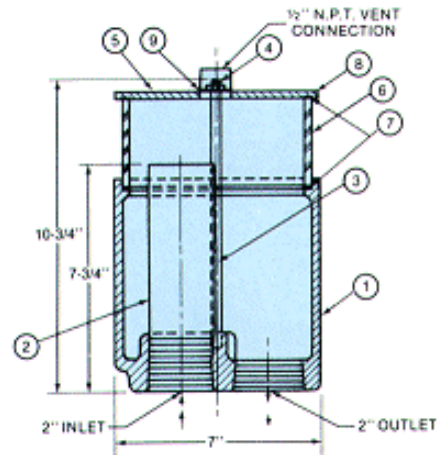
The Model 825-2 has 2" inlet and outlet connections for large capacity systems.

Specify General Assembly #89869.

For 3" inlet and outlet connections, for larger, heavy duty applications, see the 825-3.

**Repair Parts List—Model 825-2**

Item	Description	# Required	Part #
1	Body—Cast Iron	1	82055
2	2" Stud—Special Suction	1	82077
3	Tie Bolt	2	82078
4	Hex Nut	2	82509
5	Name Plate	1	08Z04
6	Sight Glass	1	82057
7	Gasket	1	82058
8	Cover	1	89870
9	Washer	2	86110



**KAYDON FILTRATION GROUP**

www.kaydonfiltration.com  
 Instant Literature-by-Fax: www.kaydonfilter.thomasregister.com  
 1571 Lukken Industrial Drive West - LaGrange, GA 30240-5756  
 Phone: 706-884-3041 Fax: 706-883-6199  
**800-241-2342 ext. 3**

ISO 9001-97



Certificate #002232  
**MADE IN U.S.A.**

## DESCRIPTION

Kaydon Model 825 Overflow Sights are designed for convenient observation of liquid flow and are extremely practical for maintaining a desired or fixed level of liquid circulating in a system.

## FEATURES

- Clear glass viewing walls, which are easily removed for occasional cleaning.
- Equipped with metal top and 1/2" NPT connection for vacuum operating installations.
- Top is easily tightened or removed.
- Cast iron body construction with white enamel interior and a Kaydon blue exterior.



## Applications

- Bearing Reservoirs
- Gear Cases
- Turbine Reservoirs
- Other Equipment

[See Page 2 for Specifications.](#)

### KAYDON FILTRATION GROUP

[www.kaydonfiltration.com](http://www.kaydonfiltration.com)

Instant Literature-by-Fax: [www.kaydonfilter.thomasregister.com](http://www.kaydonfilter.thomasregister.com)

1571 Lukken Industrial Drive West - LaGrange, GA 30240-5756

Phone: 706-884-3041 Fax: 706-883-6199

**800-241-2342 ext. 3**

ISO 9001-97



Certificate #002232

**MADE IN U.S.A.**



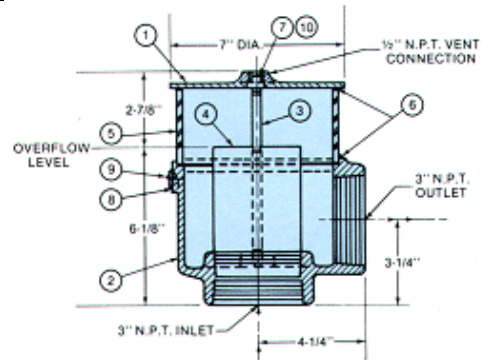
The Model 825-3 has 3" inlet and outlet connections for large capacity systems.

Specify General Assembly #50B60.

For 2" inlet and outlet connections for large capacity systems, see the 825-2.

**Repair Parts List—Model 825-2**

Item	Description	# Required	Part #
1	Cover Assembly	1	50B61
2	Body	1	50B63
3	Tie Rod	2	50B66
4	Suction Stub	1	50B64
5	Sight Glass	1	82057
6	Gasket	2	82058
7	Washer	2	86110
8	Name Plate	1	08Z04
9	Machine Screw	2	27072
10	Hex Nut	2	82509



**KAYDON FILTRATION GROUP**

www.kaydonfiltration.com  
 Instant Literature-by-Fax: www.kaydonfilter.thomasregister.com  
 1571 Lukken Industrial Drive West - LaGrange, GA 30240-5756  
 Phone: 706-884-3041 Fax: 706-883-6199  
**800-241-2342 ext. 3**

ISO 9001-97



Certificate #002232  
**MADE IN U.S.A.**